

# **A History**

## **(The First 40 Years)**

Compiled by

**Ray Lovell**

**01/08/2012**

**latest revision 21/01/2019**

## Prologue:-

The **Kapiti Camera Club** has been meeting regularly for over 40 years in the Porirua/Kapiti District. It is a special interest community group that has grown and prospered over the years achieving many milestones along the way.

There have been set backs where membership numbers have waxed and waned, creative disagreements, and a disastrous fire that all but destroyed its clubrooms but due to a group of hardcore enthusiasts sharing their passion for photography has ensured the enduring longevity of the Kapiti Camera Club and the strong fellowship of its members.

This is the story of the **KCC** and those people who have made it what it represents today.

## **Acknowledgements:-**

From 1969 to 1988 the Kapiti Camera Club sponsored “**Cable Release**”, a newsletter produced by Eric Honey which was the single most valuable resource for researching information about the history of the Kapiti Camera Club. I owe Eric a huge debt of gratitude for his tireless endeavors for a period of over 20 years when he was producing informative, chatty and knowledgeable newsletters on a regular basis.

“Cable Release” morphed into the “**Kapiti Camera Club Newsletter**” early in 1990 and stuttered along to mid 1997 when a real effort was made to revitalize the concept, renamed “**The Kapiti Focus**” and featured regular president’s reports, contributing articles of photographic interest from members and snippets of photographic interest gleaned from magazines and the fast developing internet WWW. A series of articles penned anonymously by IRIS (meaning “I read it somewhere”) portrayed interesting historical “snap-shots” and I have been able to plagiarize extracts from these to give a chronological perspective to this narrative. Sadly, interest in “The Kapiti Focus” waned only after a few issues and the 2000 October issue marked its final appearance.

I have perused numerous committee reports, president’s reports and papers prepared for those special occasions that have survived a somewhat haphazard filing system in our cupboard in the Attic at the Gear Homestead Woolshed.

I believe that our history needs to be written (and updated again in the future) so that aspiring photographers wanting to join

our club can learn from our long serving club members and maybe learn something which can only enhance their own success and contribution within the Kapiti Camera Club.

I wish to extend a special thank you to several long serving members who were more than happy to share their “experiences” and their involvement in the KCC with me. I am indebted to David and Carol Holt, Geoff Marshall, Neil Penman, Joe Ten Broeke, Pete Lang, Meyricke Serjeantson, Patsy Williamson, Dennis Hamblin and several others who have assisted me in this research and shown interest in the project.

Consider this “History” as work in progress, for a history not only dwells on the past, it continues into the future. As every year passes – there is more to write about. This should continue for a long time yet. Hopefully we can rename this history “KCC The First 50 Years” in a few years time. (Editor's note:- this is nearly complete. The "KCC Timeline 2009 - 2019" will be published separately on 24 February 2019 on the KCC web site).

On 7 November 2018, David Holt (the original founder of the KCC) contacted us in the "run-up" to our 50th Anniversary and supplied an interesting narrative about the formation of the Kapiti Camera Club. This history has been amended accordingly.

As to what is presented here – please feel free to comment.

This book represents work in progress and your comments will be welcomed by [ray@actrix.gen.nz](mailto:ray@actrix.gen.nz) .

Thank you.





Members of the Kapiti Camera Club  
front steps of Gear Homestead  
photo by Neil Penman taken approx. 1980

## **Beginnings:-**

Photography has always been an engrossing, time consuming passion for many people, what-ever their backgrounds, regardless of colour, creed, nationality and/or gender. The taking and making of photographic images is one of those subjects that can be discussed on any level no matter the degree of specialisation, ability, and/or creativity.

Almost everyone possessive of a camera is able to capably reproduce imagery and show off their results to families, friends and other interested parties. Such egotistical flair is commendable and is inbuilt into any creative person, artist, dancer, entertainer and photographer.

Good photography like cream rises to the top and attracts the most attention and the author, creator, artist (nay photographer) gains prominence amongst his/her peers. It is a non selfish pastime, a **passion** where most photographers whether recreational, professional or just snap shooters give up their time to share, discuss and pass on their knowledge and socialize with others of a similar ilk.

By the very nature of the medium, photography is a **sharing** recreational pursuit.

Historically, New Zealand districts and regions had many localized photographic interest groups. In some cases these had their origins in colonial New Zealand and several prominent pioneer photographers formed groups of like minded individuals.

As an example the **Wellington Photographic Society** was formed in 1892 and is one of the oldest societies in New Zealand.

In the 1950s camera clubs in New Zealand were a growing phenomenon, a situation caused by the release of cameras and film on the market after import restrictions imposed by the Second World War were lifted. Also the changing economic climate made it easier to invest in a recreational hobby such as photography with all the trimmings that go with it.

The first united union of New Zealand photographers really began when a Christchurch based photographer **Fred Bowron** was invited to attend an annual Photography convention in Baltimore, USA 1950 where he was hosted by members of the **Photographic Society of America** (PSA). This experience prompted Fred to propose running a similar New Zealand conference together with a National Exhibition in Queenstown. His proposals were put before the **Christchurch Photographic Society** to host the event.

There was a tremendous response and many photographic groups throughout New Zealand wanted to take part. This interest also re-ignited the idea of forming a national body but this raised fears that such a body may “take over” their independence and their ability to hold National exhibitions. The leaders of some of New Zealand’s larger societies such as Auckland, Waikato, Wellington, Christchurch and Dunedin worked through the problems and in the pursuit of sharing a common interest, learning from each other, getting the chance to see other peoples’ photography and having fun, won the day and no further barriers were placed in the way by any of the participating clubs and societies.

Invitations were sent to the approximately 30 New Zealand camera clubs of that time, and over 100 keen photographers from all over the country attended the inaugural **South Island Photographic Convention** held in Queenstown for six days between 24 - 30 April 1952.

The first **National Salon of Photography**, held in conjunction with the convention, had an extensive exhibition of self processed mounted monochrome prints of the set size 16 inches x 20 inches.

On the last afternoon of the convention a meeting of delegates was held and the proposal to run an annual convention alternating between the North and South Islands and establish a photographic council of New Zealand clubs was met with acclamation.

It was decided that the **Waikato Photographic Society** would host the 1953 convention in Rotorua and at that event the society would be formed. It was suggested that the association be developed along the lines of the American Photographic Society which gave its personal and organizational support for the venture, and it would be called the '**New Zealand Photographic Council**'. An interim committee of enthusiasts from both islands worked with unflagging zeal for what became known as '**the cause**'.

It was at the Rotorua convention held on 17 April 1953 that the **Photographic Society of New Zealand** (PSNZ) was born.

The prime objective of the PSNZ is “***To promote the fuller and wider enjoyment of photography in New Zealand as an art, science and activity***”.

The **PSNZ** now has over 1000 members throughout New Zealand and a further 2000 belonging to more than 60 affiliated photography clubs of which the Kapiti Camera Club was one of the early affiliates.

## And finally.... To the **Kapiti Camera Club**

The Porirua basin was fortunate to have attracted several large ‘known’ companies to the area because of “cheaper” land and a huge available labour force principally from the fast growing major state housing area over in the “East”. GEC (General Electric Company), Kodak, Chubb, Ashley Wallpaper, W.R. Grace and Todd Motors (later Mitsubishi Motors) to name a few were all prominent.

There is no need to dwell on the importance and prominence of the Elsdon based **Kodak** factory (established in 1961 and employing over 100 individuals at its peak) where processing of Kodak film was done for all of New Zealand. Kodak were active sponsors for photography groups and actively promoted an interest in photography and of course in their company’s product.

During the early 60's Kodak promoted a thriving Camera/Photography group "in-house" publishing the results of their competitions in the local paper (Kapi Mana).

This interested **Edith Beck** an enthusiastic amateur photographer (living in Paremata) who wanting to improve her knowledge of photography particularly developing and printing her photographs with her recently purchased 35mm camera (a Voigtlander) in July 1961.

Edith approached Kodak and enquired how she could join their group. However she was politely turned down and informed the competitions were exclusively a privilege for Kodak staff.

There were no other "local" Camera/Photography groups.

By coincidence the Kapi Mana News printed a public notice calling for a meeting to be held in the Porirua Mungavin Hall to see whether a camera club could be formed. Edith and her husband attended that meeting and together with a number of other locals decided there was sufficient interest to warrant forming a club independently to the Kodak group. One of the organisers of this meeting was **Kath Rapson** who was working at Kodak and had previously worked in another photographic studio somewhere in Wellington. With these bona fides she was duly entrusted with forming the new Porirua Club.

It was decided to call this group the “**Porirua Photographic Society**”. It was believed that "society" would give added status to the group rather than "club" because during the early 60's Porirua was a considered a rather “raw place” for residents stigmatised by the Porirua Hospital Mental Institution which was prominent in Porirua at the time.

The PSS met in the Hartham Women's Centre upstairs above the men's clothing shop. This was during the mid and late 60's. Edith and her husband were involved for a period of several years when upon the death of her husband her interests dropped off. Membership and attendance was also spasmodic at best and somewhat divided due to a lack of positive direction from the PPS executive.

**David and Carol Holt** emigrated to Porirua (Paremata) in 1968 from England where David, a qualified 12-colour wallpaper printing machine operator to work at Ashley Wallpapers.

Before leaving Britain, David had been a member of the Christchurch Camera Club (in England) and so, upon arrival in NZ, sought out a camera club near to where they lived finding the Porirua Photographic Society which David joined. It was at the time that the PSS was in a state of decline with falling membership and an overall lack of positive direction.

Unimpressed with progress the Holts formed a separate or "breakaway" group at their home in Mana View Road, Paremata.

This group followed the structure and activities promoted by David's Christchurch Camera Club back in England. This was an unfortunate state of affairs as two special interest photography groups so close together would be certain to suffer a loss of support. The Holts however proved to be more involved and better organised than the PPS and as a consequence the new group prospered and grew where upon the Porirua Photographic Society faded further and was finally disbanded after several more years of wavering inaction.

### **Formation Of Kapiti Camera Club**

An encouraging attendance at a meeting held on Monday, February 24, with a view to forming a camera club to serve the area from Paremata to Paraparaumu resulted in an unanimous decision to name the club the Kapiti Camera Club.

The next meeting was fixed for March 12, when all interested persons are invited to bring half a dozen samples of their work for inclusion in a print and slide show.

No committee was elected at the inaugural meeting as it was generally felt that it would be better to wait until all interested parties could be associated with the club.

Mr Les Stone, of Pukerua Bay, offered to finance a further advertisement in Kapi-Mana News to attract the attention of more prospective members, and his offer was gratefully accepted by the club.

Kapi Mana (dated 5 March 1969)

David placed the above advertisement in the Kapi Mana News inviting anyone interested in forming a new camera club to come to a meeting at his home at Mana View Road on 24 February 1969. Neighbours, **Ben van Vlymen** and **Eric Honey** and colleague **Brian Bushby** were among those first attending. Brian's mum and sister, **Gloria and May Bushby** and **Les Stone** and his wife also attended.

At that meeting they formalised responsibilities within the club that would serve the area from Paremata to Paraparaumu deciding to call their group **The Kapiti Camera Club**. (K.C.C.) which geographically seemed like a good idea at the time.



## **Kapiti Camera Club**

### **KAPITI CAMERA CLUB**

The Kapiti Camera Club met at 54 Mana View Road, Paremata, on March 12, when members brought along colour slides for discussion. Several of the slides were taken at or after sunset, and some were quite striking in their atmosphere. Another popular subject was children.

Several new members attended and the hope was expressed that they would come again.

The club is planning a practical evening for their next meeting, and for this reason it will be held at a different venue — in Mr Les Stone's darkroom at 52 Rawhiti Road, Pukerua Bay.

Kapiti Mana dated 19th March 1969

David drew up a tentative programme for fortnightly meetings alternating between competitions to be judged by outside people from other clubs and instructive ones given by eminent photographers and present it at another meeting in two weeks' time. Interestingly the KCC still adheres to these basic principles formulated by David, Carol and supported by the first "executive" group of neighbours.

Those attending that first meeting were formally co-opted to become "key" officers in the newly formed club. Les Stone was bestowed with the honour of being the first president as its founder David particularly didn't want a new club to appear to be "The David Holt Camera Club" and decided that he had better not accept the office of first president but having done all the organisation and arrangements for the inaugural meeting preferred the position of secretary over the first year with Carol as competition secretary. Les after a short duration departed the

scene to pursue his first love – motor racing where-upon David stepped up to President - as founder of the Kapiti Camera Club now in its second year. (1970).

Ben Van Vlymen became treasurer and was tasked with receiving \$2 subscriptions from its members.

Edith Beck came to later meetings.

After a few years, David became a sales representative for the Canon and Mamiya distributors at their Wellington branch and then, in 1977, moved to Hawkes Bay whereas his association with the KCC ended. David and Carol Holt were made life members of the Kapiti camera Club around that time.

Other prominent members in the clubs beginnings were **Mark Webber** (another neighbour), (who later became Treasurer of the PSNZ) held terms as president, treasurer and committee member. Mark remained for several years as an advisor, and mentor to junior members. Later in life he moved to Auckland where he resides still and was also honoured as a life member of the Kapiti Camera Club.

Others, including **Eric Honey** published a newsletter, on a regular basis for nearly 20 years. The newsletter continued in fits and starts under several titles and formats until the formation of the club's web pages on the internet which sadly lost much of the personal information about its members and their activities.

Recreational photography tended to be a family affair and several husband and wife "teams" as well as mother and daughter "teams" gained joint membership setting a trend which continues

today. The Bushby families were active members in every aspect of the club's activities.

There were members from as far south as Seatoun and northwards beyond Paraparaumu but most have been located in and around Porirua city.

Initially there were several members from the Paraparaumu - Waikanae area - often locals who had moved north forming the Waikanae Camera Club, but changed their name to the **Kapiti Coast Photographic Society** in 2007 to include the wider geographic coverage of the whole Kapiti Coast and thereby causing confusion, particularly to outside groups who are unaware of the geography of Kapiti and the history of the two clubs.

The Kapiti Camera Club hit the road running with a printed programme (1969/70) commencing on 26 March 1969. The programme was aimed at both novice and experienced photographers and continued virtually unchanged for more than 20 years with the majority of its member's approval.

Competitions were designed to foster photographic techniques amongst members who received "expert" advice on submitted prints and colour slides. To assist contributors a standardised set of competition rules was included on the club programme.

The programme also included a field trip to Kapiti Island (weather permitting), the Wellington Botanical Gardens and a Christmas party appears below.



# Programme

1969		
March 26	Practical evening - Enlargement.	Mr. D.R. Holt.
April 9	Competition - Open.	Mrs. K. Rapson.
April 23	Lecture - Colour Processing	Mr. B. Bushby.
May 14	Competition - Open (1)	Dr. W. Newport.
May 28	Practical evening - Mounting and retouching.	
June 11	Competition - Moods of Water (2)	Mrs. K. Rapson.
June 25	"Colour Magic" - Slide lecture	Walter Benser.
July 9	Competition - Landscape (3)	Mr. H. Sinclair.
July 23	Colour Photography After Dark. How to Plan Your Travel Show. Photography in the Space Age.	Kodak N.Z. Ltd.
August 13	Competition - Night Scenes (4)	Mr. M. Warwick.
August 27	Visit to a Photo-Litho Process Shop.	Mr. G. Duffy Offset Plates N.Z. Ltd.
September 10	Competition - Contre Jour (5)	
September 24		
October 8	Competition - Advertising (6)	Barry McNeely.
October 22		

# 1969-70

November 12	Competition - Open (7) (Final for 1969 credits)	
November 22	Outing (weather permitting) to Kapiti Island.	
November 26	Battle with Christchurch Camera Club, England.	
December 10	Christmas Social and Selection of Series Print and Slide of the Year. - Please bring your top-marked prints and slides from the numbered competitions.	
December 24	Christmas Holiday - No meeting.	
1970		
January 14	Print of the Year. Slide of the Year.	
January 28	Members holiday picture evening.	
February 11	Competition - Architecture. (1)	
February 25	"European Side-Lights"	Agfa-Gevaert N.Z. Ltd.
February 28	Outing to the Botanical Gardens, Wellington.	
March 11	Competition - Trees (2)	
March 25	Annual General Meeting and Presentation of Trophies.	
April 8	Competition - Open (3)	
April 22	Adventures in Outdoor Colour Slides Focus on the Fair A selection of slides from the Tenth Sydney International Exhibition of Photography.	Kodak N.Z. Ltd.

## COMPETITION RULES

1. Entry in all K.C.C.C. competitions is restricted to financial members.
2. The number of entries per member in each class (i.e. prints and slides) shall be limited only to a practical amount for judging in the time available.
3. All entries must be delivered to the competitions secretary by 5.30 p.m. on the Saturday prior to the competition and if more than three in each class are included the order of preference should be indicated should it be necessary for any to be withdrawn under rule 2.
4. Slides shall not be graded, but prints shall be graded as follows: - "A" grade (advanced). "B" grade (intermediate). "C" grade (beginners).
5. Marks for each print and slide shall be awarded out of twenty (20) by an independent judge based on composition, picture content, presentation, sharpness, exposure, picture quality and choice of title regardless of whether they comply with the set subject or not. The judge should, however, indicate whether, in his opinion, each entry does comply, and those which do will be awarded five (5) bonus marks by the scorekeeper.
6. In the event of an independent judge not being available, judging shall be by popular vote. (i.e. all members present awarding marks - except for their own work - and the average calculated to the next whole mark up).
7. The best two (2) marks obtained by each competitor in each class shall be those credited, and at the end of the year members' credits shall determine the annual champions in (a) Colour slide class, (b) Advanced print class, and (c) Primary (B and C grades). In the event of a tie the trophy shall be held for an equal period by each winner.
8. Prints and slides may be entered once only in 'Monthly Series' competition although work entered in series may be entered in other competitions.
9. Prints, which should not be smaller than 48 square inches, and should be mounted, must be entirely the work of the competitor. Colour slides, however, may be commercially processed, but should be spotted to international standard. (i.e. on the lower left corner of the viewing side of the mount).
10. All new members shall be graded as beginners (unless they request otherwise), and shall progress to the intermediate grade by obtaining a credit of at least ninety (90) marks (not including bonuses) including not less than two (2) seventeen (17) and one (1) eighteen (18) (or more), in three (3) consecutive competitions.
11. Progress from the intermediate to the advanced grade shall be achieved by obtaining at least five (5) twenties (20) (not including bonuses) in one year, when the worker may then submit five (5) prints to the next visiting judge. The total marks awarded must not be less than ninety (90) including at least one (1) twenty (20). Rules 10 and 11 apply to prints only.
12. The interpretation of these rules shall be at the discretion of the committee at all times and visiting judges decisions shall be final.

## Kapiti Camera Club

### PRESIDENT

G. L. Stone. Telephone Pukerua Bay 742.

### Hon. SECRETARY

D. R. Holt. 54, Mana View Road, Paremata. Telephone Plimmerton 8082.

### COMPETITIONS SECRETARY

Mrs. C. Holt.

### Hon. TREASURER

B. Bushby. Telephone Plimmerton 8931.

### COMMITTEE MEMBER

T. McAviney.

MEETINGS ON THE SECOND AND FOURTH WEDNESDAY OF EACH MONTH AT 8.00 p.m. TELEPHONE ANY OF THE ABOVE FOR THE VENUE. VISITORS WELCOME.

## Programme

1969-70

In the early days of the club – the main emphasis and interest was the colour slide and these were processed at the nearby Kodak factory. On the other side, interest was the monochrome print. Most black and white photography was developed by the members themselves as well as printing onto photographic papers in many cases in dark rooms at their home addresses. The club later invested in a dark room for the exclusive use of its members and even in 2012 the facility was still available for use although it has since been decommissioned and is now a committee room for the present club executive.

KCC's reputation grew quickly and new members were welcomed, however it quickly became apparent that as membership grew more space was needed than could be provided in individual member's homes and consequently the club set up its first club rooms in the Plimmerton Plunket Rooms. An impressive array of silverware was proudly displayed as members began to win various photographic competitions around the region and within the group itself, and as a result of their expertise, the reputation of the Kapiti Camera Club grew and attracting more members into its fold.

Some of the Silverware included the **Rothman's Cup** and the **United Friendly Society's Cup**. Others like the **Shea Cup** and the **Bushby Cup** were donated by families who were active and dedicated members in the early years. These cups were gained mainly from the annual points competitions from designated subjects within the club's annual programme. A full list of cups and trophies together with the names of recipients can be found in the appendices at the rear of this publication. Sadly

the cups are no longer in use, but are on display in the clubrooms at the attic.

By 1974 weekly meetings were held and proved very popular. Membership was around the 30 mark, and several more prominent members joined the group. Amongst these were **Albert Adams, Allan Corry and Ces Smith.**

They went on to achieve national prominence within photographic circles with their involvement with the PSNZ.

In 1976 the Kapiti Camera Club presented a sound/slide presentation entitled “A Kind of Religion” – the transcript for this presentation presented an historical review of the KCC and is partly reproduced as follows:-

*“Just across the road from Parliament Buildings in Wellington men and woman debate the merits of slides and prints and the best way of producing them. The home of the Wellington Camera Club – not a parliament of photography – but a forum nevertheless. A bastion of established photographic thought and practice, housed perhaps fittingly, beside the Wellington Cathedral, likewise highly respected for its conventions. But there are other faiths, and other photographic groups – smaller, but in their own way, important.*

*One of these not 30 kilometers from the city... north in the quiet seaside township of Plimmerton, the Kapiti Camera Club has its headquarters. In this tiny building, the local Plunket Rooms, the dedication followers of the philosophy of friends photography meet at least twice monthly. Even the worst wintry nights, or the bloodiest of TV thrillers, cannot keep its members home on club nights. These are the true believers, finding salvation in the SLR*

*Who are these people? Why do they choose to do their own thing instead of worship at the city shrine?*

*I called on their secretary, quiet, monk like John Hall. It is brother John who holds the club records, knows each member by name. John's own compelling interest in railways.... Which fill his view finder and fulfill his photographic desires, and, together they fill the club records with his success – slide of the year, 1974, Runner Up 1975, 3rd overall in the 1975 points competition. The time he spends taking photographs is matched only by the time he devotes to club affairs.*

*I asked John Hall to tell me a little about his fellow members. John, how is it a group like yours can survive, in fact thrive, when there are bigger, longer established clubs in Wellington and the Hutt Valley? Reply – We believe that bigness is not everything. Ours is perhaps a more personal kind of photography. We encourage everyone to have a go. Anyone with an interest in photography is welcome. We try to draw up a programme that has wide appeal.*

*Commentator - Your members have considerable latitude in the choice of subjects then? Reply – Oh Yes, half the points competitions are “open” – a free choice of subject.*

*I was shown the club records – the register of members. I learned about Mark Webber, committee member, Treasurer, interests – people, shops, street scenes ... slide of the year 197? And Jack Ayliffe, something of an outsider who lives in Wellington and actually works in sight of the Wellington Camera Clubrooms. But his record is impressive, and so are his slides. Jack has a great eye for colour and the unusual.*



*The Bushby's. Glora Bushby won the A grade Monochrome section in last year's points competition – but she's been equally successful with colour film in her camera. Her subjects range from intriguing table tops to fascinating waterfall scenes. Gloria's mother May, is also a successful colour worker, following in her daughter's footsteps.*

*Some societies are male dominated, but in the Kapiti Camera Club, women are sometimes more than equal and their competition successes are out of proportion to their numbers. Edith Beck proves the point. Runner up in the B-grade slide competition... won an award for a slide entered in the Natural History class at ?? Like Edith, Mary Callaghan, need not go beyond her garden to find a photographic subject. Mary is one of several husband and wife teams. Another is Jenny and Brian Soloman. They joined the group quite recently, and John is a monochrome worker. In the print of the year competition he was placed first.... And second.... And third.*

*Kapiti Camera Club members live along that stretch of shoreline known as the Golden Coast... It is noted for its sheltered harbours... its cliffs and off shore islands... its ocean beaches, and no one knows them better than Joe Tenbroeke and his family. Both feature regularly in his prize winning entries. Joe Tenbroeke headed off veteran David Holt to win the A grade slide section of the points competition last year. That's no mean achievement, for David Holt, founder of the club, (You might call him high priest of the sect) has been a consistent performer from the start in both monochrome and colour sections. His camera, too, records the Kapiti Kaleidoscope. David Holt, along with several other members, works in the photographic trade, and the*



*Kapiti area itself is associated with a name that is synonymous with photography – KODAK.*

*It is in this mosque like shrine at Elsdon, a few miles from Plimmerton that countless colour films are converted to slides.*

*John Hall denied that club members turned to face Elsdon at sunset each night. The club members are a devoted group and some regard their cameras with a reverence that could be described as fanatical. For some it is the gospel according to Miranda... others talk of the Epistle to the Minoltans. For some, their photographic philosophy is in accord with the Canons, one or two believe that the ten commandments of photography were handed down from the heights of Olympus, one prays on his Nikkormat.*

*The club has some fifty devotees, and most of them take an active part in competitions, slide, print and a few, like Murry Morrell, have explored the possibilities of the colour print.*

*The Slide and Print of the Year competition is the judgement day for the disciples of Agfa Ektachrome and Ilford... of solarisation and polarization. Even the labours of the elders, Wes Newport, Cor Grannetiqa and Ces Smith stand in judgement alongside the works of Pat Liss, Bob Pryor and George Tate.*

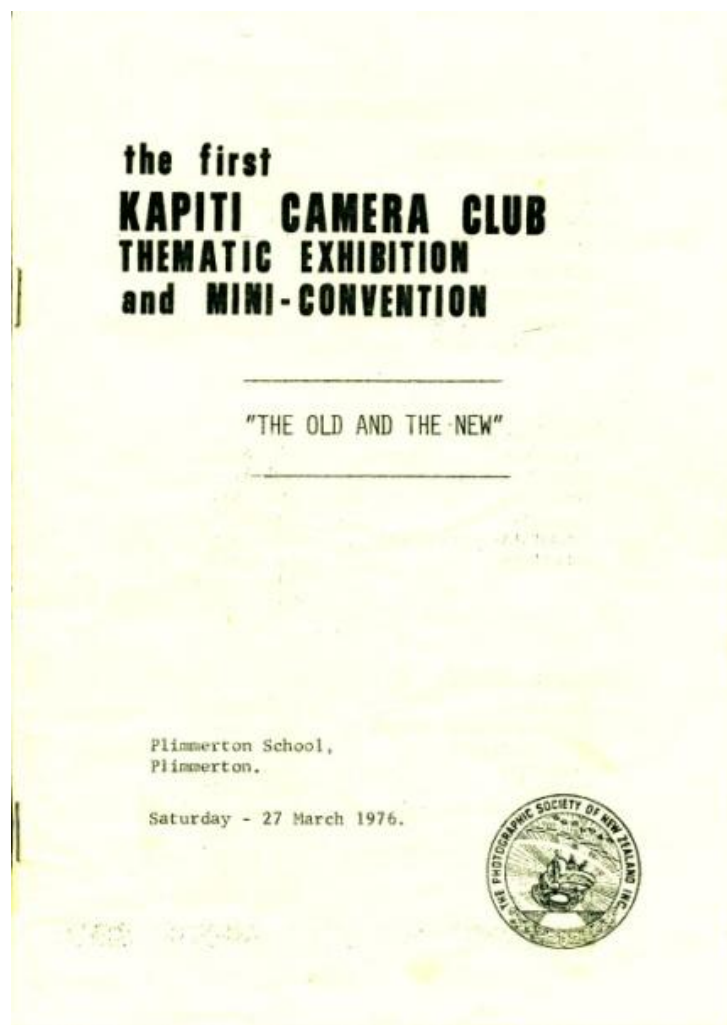
*Those who have left undone the spotting that should have been done, or have committed grievous sins in composition, exposure and mounting... are chastised. The photographic philistines are cast out and the apostles of truth and light receive their just awards”*

The author of the slideshow has not been identified to date.

The slides which have been so graphically described have not been located.

## Thematic Exhibition

The FIRST Kapiti Camera Club Thematic Exhibition and Mini Convention themed "The Old and the New" was held at Plimmerton School on Saturday 27 March 1976.





## ***In front of the camera for a change***

Appearing in front of the camera for a change, these photographers attended the Kapiti Camera Club's first thematic exhibition and mini-convention held at Plimmerton School recently as part of the fourth Mana Arts Festival.

The convention attracted over 90 people from as far as Dunedin, New Plymouth and Hastings and the highlight was a conducted tour through the Kodak Processing Laboratory at Elsdon.

Other activities included illustrated talks, printing demonstrations and an informal dinner party.

The secretary of the convention committee, Mr John Hall, said the club was delighted with the success of the venture and hopes to run a similar exhibition next year on March 26.

The winner of the monochrome prints section was Richard M Poole of Dunedin whose print was entitled Regrowth. Mr

Poole also took second place and an honours award in the section.

Results:-  
Monochrome Prints: Richard M Pool (Regrowth) 1, (Victoria and Vicky) 2, Mrs Robin M Parker, Wellington (On Lambton Quay) 3; Honours, Richard M Poole; Merit, Arthur D Bates, Wanganui, Mrs Yvonne J Cave, Wanga-

nui, Mrs Robin M Parker, and Cecil E P Smith, Kapiti; Acceptances, Arthur D Bates, Wanganui, J R Lorsch, Henderson, Fr J S Martin, Auckland, Richard M Poole, and Cecil E P Smith.  
Colour slides: Mrs A M Leslie, Owaka (Old Mother with three hour-old calf) 1, Mrs Yvonne J Cave (Architectural contrasts) 2, T W McKoy,

Wanganui (Progress Passed By) 3; Honours, Mrs A M Leslie, Fr J S Martin; Merit, Glenn Nimshall, Kapiti; Acceptances, A Breward, Whakatane, Mrs Yvonne J Cave, Frank Hinchcliffe, Waikanae, Anne Innes-Jones, Levin, Mrs A M Leslie, Mrs E G Linton, Ashburton, T W McKoy, G S Maxwell, Hamilton, W F J Scott, Blenheim.

## **Kapiti Mana Newspaper 27 March 1976**

The Exhibition and Conference was an outstanding success and gave the KCC confidence and gave impetus to further promotions and the ability to attract and "recruit" new members.

Later that year (14 September) a special general meeting was held at the Plimmerton Plunket Rooms It was proposed and seconded that the Kapiti Camera Club make application for the incorporation of the society under the Incorporated Societies Act 1908. This proposal was carried unanimously.



Members of the Kapiti Camera Club at the Mini Conference  
March 26th 1976 (photo courtesy of Joe Ten Broeke)

The SECOND Kapiti Camera Club Thematic Exhibition and Mini-Convention themed “Marine” was held at the Pukerua Bay School Hall on 26 March 1977.

**the second  
KAPITI CAMERA CLUB  
THEMATIC EXHIBITION  
and MINI-CONVENTION**

---

"MARINE"

---

Pukerua Bay School Hall,  
Pukerua Bay.

Saturday - 26 March 1977.

This "show" attracted nearly 100 people and was deemed a raging success. Several prominent photographers and authors attended several workshops and amongst these was John Naylor (The Lighthouses of New Zealand), G.S. Milne (Harbours, foreshores and marine pollution), Dr Don Robertson (Photography in Fisheries Research), James Siers (An Incredible Journey), Roger and Catherine Ironside (Underwater Photography) R.J. Singleton (Remote Photography of the Sea Bed) K.F.S. Kirby



(Offshore Oil and Gas Exploration and Development) and N. Matheson (Marine Photography)..

The Exhibition itself attracted 56 monochrome prints submitted by 15 entrants with 37 acceptances).... 180 colour slides with 32 photographers gaining 59 acceptances, and 11 colour prints which didn't make the judges cut. The selections were made by Deric Bircham, Chairman of the Qualifications Board of the New Zealand Professional Photographers Association, and John Boyd and Frank Winchcliff who also judged the exhibition assisted by James Siers, Matheson Beaumont, Roger and Catherine Ironside, and Dick Singleton each making non-competitive contributions.

Surely the KCC had come of age and proved conclusively they could work with the "big boys" in organisation, planning, logistics and competition. The event was sponsored in part by Kodak (NZ) Ltd, BP New Zealand, Camera House, Levin Camera Club and PSNZ.



Kapiti Camera Club Members enjoy a break during the “walk and talk” at the 1977 Convention.



KAPI MANA 29.3.77

## Pipes and Drums of Porirua

### need finance

An application for an annual grant from the Porirua City Council by the Pipes and Drums of Porirua, is to be placed on the estimates for consideration.

The secretary/treasurer, Mr B M Buller, said the band needed an annual grant because of its difficulty in keeping financial so it could compete in competitions.

"We have spent over \$1400 on uniforms to outfit part of the band in the last year but still require another \$1500 for further material and making plaids and kilts.

"We are losing members to established bands because of the interest in competition participation. We are not yet able to compete in the annual

competitions because we have not a full set of uniforms to outfit the band and are not in a financial position to cover accommodation and travelling costs to different centres.

"To raise funds we have organised, during the coming year, four adult dances and also hope to hold monthly Ingleside functions which are for family

groups. These will be open to the public to encourage interest in the band and be a social function for the younger people of Porirua," he said.

The band will be represented in the miniature competition at Paraparaumu in June, but this will only involve part of the band, four pipers and two drummers.

### Healthy living competition

Results of the Health Department's competition on healthy living which was held during Expo Porirua '77 were:-

Senior: Marion Wadham, Elizabeth Street, Pukerua Bay

1, Joanne Stewart, Lyndhurst Road, Tawa 2.

Junior: Lynda Harrap, Awatea Street, Porirua 1, Theresa Dillimore, Kaituna Street, Waitangiurua 2.

## PHOTOGRAPHERS HOLD EXHIBITION

Following the success of the Kapiti Camera Club's first Thematic Exhibition and Mini-Convention in March 1976 at Plimerton when the theme was "The Old and the New", the club held a second exhibition and mini-convention, this year's theme being "Marine."

Prints and colour slides received in recent weeks from all over New Zealand and the selection panel of Deric Bircham, chairman of the Qualifications Board of the New Zealand Professional Photographer's Association, John Boyd and Frank Hinch-cliff, both Photographic Society of N.Z. panel judges, chose 58 colour slides and 37 monochrome prints for exhibition.

Although 11 colour prints were submitted, the panel decided the standard of both photography and print finishing was below that required for inclusion in the exhibition and none were accepted.

In the Monochrome Print section the top honours and The Kodak Trophy was awarded to

Richard Poole of Dunedin who won the event last year.

First place in the Colour Slides went to Kapiti Camera Club secretary Glenn Minshall who adds the Kodak Trophy to numerous other awards his fresh approach to photography has earned in the last couple of years.

The accepted prints were displayed at BP House in Wellington from March 21 to 25 and at the Mini-convention on March 26 at Pukerua Bay School.

The convention programme included an illustrated talk by well-known Wellington adventurer and photographer James Siers entitled "An Incredible Journey", in which he told the story of his voyage from the Gilbert Island to Fiji in a replica Gilbert Islands Canoe.

Kapiti Camera Club member John Naylor presented an item on Lighthouses of New Zealand, local Underwater Association instructors Roger and Catherine Ironside gave an illustrated talk on Underwater Photography and there

were items dealing with such diverse marine topics as fisheries research, undersea oil and gas exploration and marine pollution.

Principal speaker was past president of the Photographic Society of New Zealand and marine photographer extraordinary Matheson Beaumont.

The accepted exhibition slides were also screened at the convention.

The convention dinner was held at Cobham Court Restaurant, Porirua, on Saturday with entertainment by Noel Brown and on Sunday there were various photographic field trips including one to Kapiti Island.

The master of ceremonies for the Mini-convention was the founder of Kapiti Camera Club, David Holt who has seen the club grow from the handful of people who replied to an advertisement in Kapi-Mana of over 40 members. He also bade the club farewell at the close of the convention, as he is leaving with his family to live in Hawkes Bay.

Kapi Mana 29 March 1977



## 1977 Trophy Awards

Slide of the year	Glenn Minshall
Print of the Year	Bruce Young
Colour Print of the Year	Dave Holt
'B' Grade slide Winner	Peggy Maidens
Most Improved Colour Worker	Richard Gavey
Animal Studies – Prints	Bruce Young
- Slides	Dave Holt
Landscape & Coastal Prints	Bruce Young
'A' Grade slides	Glenn Minshall
Bushby Cup - Child Study	John Hall
	Mark Webber

In 1978 David and Carol Holt were made life members of the KCC - the following year they moved to the Hawkes Bay where David continued to advance his photographic talents when in 1979 he was awarded an associateship of the PSNZ and in 1985, a fellowship of the Hawkes Bay Professional Photographers Institute for portraiture.

David then moved to Australia where he still resides.

1978 extract from President’s report by Jack Ayliffe

“Noted the ebb and flow of club membership, would like to see better support for competitions. Jack felt that the club was not “pulling its weight” in the Porirua District, for example club should be going out to Porirua Hospital and the Russell Kemp Old People’s Home”.

Subscriptions	One person	\$10
	Man and Wife	\$15
	Junior	\$5

**1979**

The THIRD Kapiti Camera Club Thematic Exhibition and Mini-Convention themed “People” was held at the Pukerua Bay School Hall.

This mini-convention was described as a major triumph, with a well balanced programmed that was interesting, educational and entertaining. It ran smoothly, with almost split second timing; and the catering (by the Titahi Bay Kindergarten Mother’s Club) was a highlight of the meeting.

The judges were Maurice Hill, Ans Westra and Ronald Woolf. Sponsors included Kodak (Trophy, projection equipment) ‘Camera’ and ‘Zoom’ (advertising and promotion), Titahi Kindergarten Mother’s Club (Luncheon), Plimmerton Red Cross

(Loan of crockery), Mana College Board of Governors (Mana College Facilities), Camera House, Willis Street (for generous assistance) and club members, wives and friends.

Professional presentations by Chris Nolan, Police photography, Peter Bush, journalism photography, Heather Hills, marketing photography, Geoff Mason, "Faces of the World", Maui Pomare, "Customs and Traditions of the Maori People". Also a short address by Bob Carter (assistant secretary of Culture, Recreation and Youth) of the Internal Affairs.

80 registrations were received, including a good number of KCC members. 81 prints were entered in the monochrome section from which 17 were accepted. 10 of the 21 entrants received awards, but there was no champion print. In the colour section, 8 people entered 26 colour prints. There were 132 colour slides entered by 34 people but only 21 slides from 18 people were accepted. The champion slide was the entry "Water Ritual" by R. J. McKie of Christchurch.

### **Presentation of Trophies for year 1979**

Print of the Year (U.F.S. Cup)	Bruce Young
Champion A Grade Print	Bruce Young
Child Study (Bushby Cup)	Bruce Young
Champion Colour Print (Kodak)	Eric Honey
Slide of the Year (David Holt Cup)	Eric Honey
Landscape & Coastal Monochrome	Eric Honey

Colour Slide Champion A Grade	Peggy Maidens
Colour Slide Champion B Grade	Gordon Forbes
Animal Study (Shea Cup)	Wally Boyd
	Allan Corry
Most Improved worker	No award
Monochrome Prints (Junior)	No Juniors

1979 extracts from the Presidents Report by Mark Webber

“Our club has now seen 10 years go by and in that time over 100 photographers have been members of the club and through our thematics we have made an impression on the NZ photography scene. The past twelve months have seen the 3rd Thematic Exhibition and mini convention, presented slide shows to community groups and participated in the reprinting of the Porirua Libraries Historical records.

Restated the basic objective of the club:-

**“The encouragement of the study and practice of photography in all its aspects”.**

In March 1979, the KCC celebrated it's 10th Anniversary with a barbeque and a few drinks at Eric Honey's address in Mana View Road, Paremata.



Thanks to Carol LeCheminant( previously Carol Holt for these photographs)

On Saturday 19th July 1980 the fourth Thematic was held at Mana College..

This exhibition was open to all photographers upon the payment of an entry fee. The entry fee in each section was \$2.50NZ, but if all sections were entered the total fee was \$7NZ.

#### Program of events

- 9.15am Registrations and morning tea
- 10.00am Kapiti Entertains
- 10.20am Visit to Kodak Laboratory
- 12 noon Lunch
- 1.15pm Kapiti and their Community Involvement
- 1.30pm Kodak material/products
- 2.15pm Sky Divers film
- 2.30pm Screening Exhibition Slides
- 3.00pm Afternoon Tea
- 3.15pm Roger T Brownsey ARPS,APSNZ,APSA –  
Happiness is.....



**The FOURTH  
KAPITI CAMERA CLUB  
THEMATIC EXHIBITION  
and MINI-CONVENTION**

**HAPPINESS IS ....**

Saturday 19 July 1980  
Mana College  
Awarua St. Elsdon, Porirua.

This Thematic was organised by the Kapiti Camera Club as part of the 6th Mana Arts Festival 1980. It also shared an interesting interaction with local schools – The Thematic had a theme “Kapiti Entertains... where Mark Webber showed sets of slides of local

interest and another set featuring the theme “Happiness is.... Set to music of a song of the same name sung by school children.

There was also an approach from the Plimmerton School to undertake a series of assignments for educational purposes at the school.

## **1980 Presentations of Trophies**

Print Champion`	Arthur May
Slide Champion “A” Grade	Jack Ayliffe
Print of the Year	Bruce Young
Slide of the Year	Joe Ten Broeke
Colour Print of the Year	Bruce Young
Slide Champion “B” Grade	Denis Allison
Landscape & Coastal	Bruce Young
Best Child Study	Peggy Maidens

1980 extracts from the President’s report by Joe Ten Broeke

“The aim of the Kapiti Camera Club as I see it, is the enjoyment of photography. For some this means anticipation in competitions, for others it means attaining new skills. Again for others it means comparing work with others, receiving and giving help and so progress technically or artistically. For this reason I think that our



contact with outside clubs has been important, we must widen our horizons and not turn inward.

A few thoughts to ponder:-

How about special workshops for beginners and young members where they can do their own thing?

Ways in which we can make photography available and alive to more people.

How can we stimulate greater involvement of members in practical sessions?

Forming small circles of people with same interests.”

1981 marked a move of address for the KCC.

Owing to a lack of space and the ever growing membership the club moved from the Plimmerton Plunket Rooms up the road to a moth-balled church at 18 Motuhara Road, Plimmerton. The then secretary Arthur May, lived a few doors away and set up office in the church. The church was eventually taken over by a plumber and is now part of a completely rebuilt up market home.

The club then spent a short but happy time in the Porirua Museum before the next stage in its development becoming “long-term” tenants of the Gear Homestead Woolshed. This came about partly by chance and partly by design. Originally it was mooted by the powers to be that the land where the Gear Homestead sat would be developed for the construction of Aotea College. This would involve extensive land development and the

destruction of the homestead and its annex buildings among which was the nearly derelict two story Woolshed building. Fortunately – the decision was made to build the Aotea College across the road, to an area where flatter land existed for proposed playing fields.

A group of Porirua potters lead by Julie Obren were also seeking suitable accommodation for their group and began negotiations with the PCC to utilize the Woolshed building for club rooms.

On 24 November 1981, a notice was placed in the Kapi Mana and interested groups held their first meetings, where a joint committee of the “user” groups was formed to liaise with the Porirua City Council. The local Mongrel Mob had also expressed an interest in occupying the building, so the Potters put forward a case of community utilization involving other community based groups sharing a common interest in artistic pursuits. This included spinners, weavers, the Kapiti Camera Club and the Mana Arts Society.

The PCC were concerned about the prospect of “gang” ownership and more than happy to accept the “user – group” community promotion and granted almost immediate possession provided all the refurbishment was completed by the various interest groups at no cost to the Council.

Everybody “mucked in”. There was a lot to do, and months of cleaning, building painting and carpeting by members of the Kapiti Camera Club under the tutelage of then President Neil Penman and his committee until the refurbishment was complete. Money was raised through cake stalls and garage sales. With massive physical help from members, led by the energetic and specialized

skills of Joe Ten Broeke and others, the upper part of a century old woolshed was converted into comfortable clubrooms with a kitchen and darkroom facilities. The result was to such a high standard that the PCC let the tenants use the building at a “peppercorn” rental.









The Official opening of the Woolshed Attic was held on 27 November 1982 just a year after the idea was first mooted.

1981 extracts from the President's Report presented by Mark Webber

"What does photography mean to you?"

- It can mean many things to many people –
- Some like to enter competitions
- Some like to hear comments
- Some come to be entertained
- Some see it as a challenge

- Some come to learn new skills
- Some come to talk about common interests.

We have good premises, we have lights, we have a darkroom – these things just don't happen. I feel I can speak for all of the membership in thanking the committee who worked behind the scenes – it has been a hard working committee keen to advance your club....

.... Getting stale? Bored by the usual comments from the judges or speeches. Well – why not set yourself a challenge? For the winter months photograph a cup and saucer, or a shoe or whatever. Not once or twice; not once or twice a week. Try new lighting, different angles. Why not bring your results along when you have completed your project and tell others about it, discuss it, share it.

That way we all can experience photography in a deeper way, and don't be afraid to build on others ideas, our library is full of them.

A final word of thanks to all for being part of the Kapiti Camera Club. Keep working and enjoying photography by sharing with others”.

1982 extract from the President's Report presented by Mark Webber retiring president.

“Financial – several members made loans to the club totaling \$175. The year ending with a small deficient which would have been quite significant if we had not had this income from other than subs. Some of these loans were converted into donations which were welcomed”.





The ladies of the KCC arranged Cake Stalls to raise money easing the dire financial stresses of the club.



Cake Stall Porirua shops

Sadly 1982 proved a difficult one for the club as there was a fall off in members participation in club activities, with the resulting

lack of apparent interest leading to the cancellation of the 5th thematic.

In 1982 the Mana Arts Festival Trust presented their 7th Festival – the Kapiti Camera Club was part of the festival by holding a very successful exhibition at the Porirua Museum. This was entered into their catalogue as follows:- “A special exhibition arranged at the museum with the Kapiti Camera Club, to coincide with its mini-convention. This is a National Competition of black and white, and colour prints and colour slides and all will be on display at the museum during this exhibition which runs until Monday the 12th. The exhibition and competition is on the theme “Toil”, although some other work will also be on display. Two evening showings of selected slides will also be held.”



In a small way this compensated for the cancellation of the Thematic convention, and was sufficient to continue flying the flag

for the club, and the committee was working overtime throughout 1983 to hold on to its existing members and promote interest in prospective membership. New members would be the life blood of the struggling club and 1983 marked the turn around and saw the club once again on a steady keel.

Also in 1983, the club had to come to grips with the changing philosophy and modernization of photographic trends. The club declared itself as a colour slide club, which only seemed logical as its beginnings were born into the hey-day of colour slide film where Kodachrome was king. Most “snap-shot” photography of families, friends, pets and parties were recorded on reversal film and a generation of photographers is very familiar with those ubiquitous yellow boxes that were an eagerly awaited part of the household mail.

The President at the time lamented this change and commented that the Kodak processing plant across the harbor from the KCC was a monument to an bygone era.

He went on to ponder the directions of photography and commented in the newsletter that slides have been replaced by prints and curb side processing plants or photo booths now cater for instant expectations.

“The KCC remains faithful to the colour slide – but after the colour slide, what?? An increasing number of members are moving to monochrome and a few, very few are making their own colour prints. Colour printing is regarded as tricky, less forgiving in terms of accurate processing, and mistakes very expensive. But there are indications that new – and more simple processes will change all this”.

It was the year 1983 that marked one of the club's major milestones when it moved into a permanent home or at least in 1983 that was the "idea" . Sadly after nearly 30 years the club was "evicted" by the Porirua City Council in late 2012 as they had formed the opinion the building was unsafe following extensive consultation with engineers, the Porirua Arts Council, the Historic Places Trust and others decided the building was no longer suitable for occupation. Accordingly notice was duly given for the KCC to vacate the premises by 31 December 2012 – a legacy of the tragic and fateful Christchurch earthquakes.....

It was unique as the Gear Homestead was designated an historic place and the woolshed attic, had not only the creaking ambience but had its beginnings when photography was very young. It was fitting therefore that the KCC, in association with the Waikato Photographic Society, presented the international sound/slide show "Kaleidoscope". The club was also responsible for the PSNZ exhibition in the Wellington area at the Porirua Museum which had been the KCC's interim home. There were also several successful winter workshops. Membership peaked at over 50 and the club library was developed.

1983 also marked the beginning of the inter-club battle competitions. This was for colour slides and between Hutt, Wellington and KCC, 10 subject classes,

Dusk or Dawn

NZ Landscape

Marine

Pattern/Texture

Animal

Doors/Windows

Character Study

City at Night

Angle Shot

Open

This friendly rivalry has been extended over the years and now 5 camera clubs fight over bragging rights. Each club takes it in turns to “host” the competition and the host club selects the competition topics. KCC has had mixed results. In 2011 the club came a very credible second owing to some outstanding images submitted by several members attracting the attention of the judge Bruce Girdwood.

1983 was designated an historical “peak” year for the club, and not wishing to rest on its laurels the committee set out to ensure 1984 would eclipse it. No mean feat.

The President’s report for 1983 was presented by Neil Penman. He had every reason to crow about establishing the club in new club rooms with complete dark room facilities. Looking back one year the club had faced a critical time in its history with no permanent base. The club had been energized by inspired leadership and a loyal dedicated committee. A definite turnaround in the club’s fortunes was recorded, and prospects were looking good for the following years.

1984 KCC participation in the Mana Arts Festival marked the start of an association with the Porirua City Council, the theme for KCC was “The Seeing Eye” and involved a public exhibition of members photographs held in the club rooms at Gear Homestead together with the spinners and weavers who also share the facilities.

Huge accolades were received this year when the PSNZ named the KCC as the Camera Club of the month. An item in their newsletter drew many pats on the back for club members.

“ 5 star rating for this club! They are like an energized octopus with their activities as they set up their new clubroom with its A1 darkroom – U shaped with the enlarger on a table in the middle so groups can gather around and see what’s happening. Their life members are kept in touch with. Their new members are encouraged. They have life lines with overseas clubs – in this case the Lancaster Camera Club of California. They actively encourage PSNZ Events and the Society itself. (In fact, in the April issue they described the Society as a sort of FOL of amateur photographic societies and the present Jim Knox of PSNZ being President Mark Webber. The fact that he is also a life member of their club gave them liberties I’m sure! PSNZ is different from the FOL in that it has individual membership. Now maybe... KCC members broaden their photographic backgrounds too by sharing with other groups views on photography. Four members of the Photoforum, Martin Taylor, Steve Parris, Mark Strange and Brian Davies brought along work one night and were admired for their dedication to their photography, AND they wrote to their community offering to photograph them to help extend their own



experience. You should see their visiting list now! And they are enjoying it!”

1984 marked a change in competitions – previously competitions were judged on a ‘one-class’ basis, but membership is over 50 with widely different individual levels of experience, a three tier judging system was introduced....

‘A’ grade (advanced)

‘B’ grade (intermediate)

‘C’ grade (beginners)

This ‘system’ applied to both slides and prints. Coupled with an aggregate numbering system as follows:-

Each entry shall be awarded out of 20 by an independent judge based on composition, picture content, presentation, sharpness, exposure, picture quality, impact, choice of title and compliance with set subjects.

In the event of an independent judge not being available, judging is by popular vote (all members present awarding marks – except for their own work – and the average calculated to the next whole mark up.

The best 2 marks obtained by each competitor are ‘credited’, so that at the end of the year members ‘credits’ shall determine the series champions.

Entrants chose which grade they wish to enter – a change of grade may only take place at the end of the competitive year.

Winners vie for cups Shea Cup donated by Ken Shea, enthusiast photographer and Police photographer.. and Bushby Cup.

During 1984, Geoff Marshall came to prominence within the club by making competition history and scoring a notable double. He was the first person to win both the A grade slide and print sections of the annual points competitions.

Also during 1984 the club was visited by an internationally famous photographer Joan Wakelin. She toured New Zealand under the auspices' of PSNZ and when in Wellington conducted seminars arranged by KCC.

The 1984 President's Report was presented by Allan Corry who commented upon presentation of members' work in public displays. "It is through these exhibitions that we attract new members and show the public the high standards of work the club is capable of. We have to market our activities in order to compete with all the other recreational clubs in the area for new members because new faces, voices and ideas pump fresh blood into the very arteries of the club".

Early in 1985 there was another pause for breath when an article appeared in Cable Release declaring the club was at the cross roads. It seemed that the KCC was basically a colour slide appreciation group and posed the question as to whether this was the way to go in the future.

Should the club encourage existing and new members to broaden their photographic horizons, by crossing new frontiers...?

The articles then took a retrospective look at advances to camera technology, sophisticated aids to make photography easier, longer focal length lens, and one of the last bastions of development – the auto focusing camera... shock horror the SLR's were beginning to descend into the region previously held

by the snappy happy cameras such as Instamatics. In the same issue “towards Tomorrow” the author ponders the question of whether electronics make a take-over bid for the reproductive method itself? Will film as we know it be replaced by an electronic means of recording (and printing) the image.

On 31 August 1985, KCC hosted the Central Regional Convention for PSNZ affiliated clubs and societies at Aotea College. This was also judged as a resounding success. There were 70 registrations, a number slightly down on the previous central regional hosted by the Upper Hutt Club. A wide representation from 11 of the 19 clubs in the region, with a particularly strong contingent from Foxton. Two thirds of the registrations came from non-PSNZ members. The regional culminated in 16 members making a day trip to Kapiti Island.

NEW ZEALAND  
INTERNATIONAL

---

**SOUND - SLIDE  
EXHIBITION  
OF  
PHOTOGRAPHY**


Organised by  
WAIKATO PHOTOGRAPHIC SOCIETY

*see some of the  
**WORLD'S BEST  
PROGRAMMES**  
of photographs with sound*

\*Travel                    \*Story and Song  
\*Nature Study        \*Humour  
                                 \*Documentary

---

SHOWING IN YOUR AREA AS FOLLOWS:



AT

**KAPITI CAMERA CLUB  
GEAR HOUSE WOOLSHED  
PORIRUA**

**TUESDAY 30th JULY**  
7-30pm

ADMISSION: **\$2-50**

Appeared in Cable Release July 1985

1986 The club's longest serving committee member Joe Ten Broeke was again elected as President of the Kapiti Camera Club. Club rules limit presidential office to two consecutive terms, and for most of the past decade Joe has been either president or deputy.....

KCC take part in the Mana Arts Festival providing an exhibition of prints with emphasis on those depicting the performing arts.

More emphasis on prints involves a re-write of the competition rules. Interestingly it was decided that prints (and

slides) could be commercially processed for all competition grades and no longer had to be solely the work of the competitor.

Geoff Marshall takes out the Bushby Cup and was marked as the Club Photographer of the Year, with 510 competition points, (451 net) plus the awards for Both Print of the Year and Monochrome Print of the Year..

The end of 1986 marked an interesting comment in Cable Release, the Club newsletter – where it was seriously considered that through lack of interest the KCC may disappear without trace, as entrants in competitions were disappointing as was attendances at several meetings throughout the year. On a positive note -

#### The 1986 competition results

Slide of the Year	Geoff Marshall
Monochrome Print of the Year	Neil Penman
Colour Print of the Year	Albert Adams.

1987 saw Joe Ten Broeke step aside from presidency committee commitments, and Geoff Marshall moved up into the vacated seat calling upon innovation and involvement from its members. The name of the game is participation, not just in club competitions but in all facets of club life.

The disappointing competition entry levels resulted in another review of the point system and a 5 x 5 format mooted. The A/B/C grades would disappear resulting in the retirement of

some of the present silverware with consideration to certificates of merit covering the five series.

This works as follows:-

- 1 Five set subject competitions for novices.
- 2 A repeat of these, to allow beginners to have another go at subjects in the first series. This also caters to members joining during the year.
- 3 Five “set” subjects for all-comers
- 4 Five free choice (open) competitions
- 5 Four assignments (with a degree of choice) and one portfolio intended to present a challenge to advanced competitors.



Scene from 1987 Christmas Party in club rooms.



## 1987 competition results

Slide of the Year	Joe Ten Broeke
Monochrome Print	Allen Corry
Colour Print	David Hinds

1988 was the year of crisis for the KCC, a mere handful of members attended the AGM, and couldn't muster a committee, let alone a president. This raised the question whether a shrinking membership and the loss of several very active members meant the Kapiti Camera Club was still relevant.

1988 was the implementation year for a new set of competition rules and judging procedures being reviewed. Five of the 10 clubs competitions were made redundant.

## 1988 competition results

Slide of the Year	Allan Corry
Monochrome Print	Bruce Young
Colour Print	Jim Howell



Porirua CIB detectives Colin Rudd (left) and Kevin Riordan inspect the burnt-out Gear Homestead woolshed.

## Suspicious fire in Gear woolshed

The Porirua CIB were investigating a suspicious fire at the Gear Homestead woolshed early today.

Detective Colin Rudd said a fire safety officer who inspected the scene last night believed the fire was suspicious but no cause had yet been established.

He said the police would be liaising with the fire officer to continue their investigation.

The fire, which started at about 11pm yesterday, was no-

ticed by a passing police patrol. Two fire engines attended the blaze and had it under control within half an hour.

There was little damage to the exterior of the two-storey building, but more than half of its interior was only a blackened hole strewn with burnt furniture and equipment.

The building, like the homestead, was more than 100 years old and in constant use by mainly arts and crafts groups. Gear

Homestead Woolshed Potters secretary Cath Arnold estimated that the value of damage was at least \$30,000. The main room, which had eight pottery wheels, glazing and pottery equipment, was completely burnt out.

She said they were uncertain about the extent of the damage to another room which housed their \$10,000 kiln. Luckily, the 70-member group had insured all their equipment, she said.

Upstairs, part of the Kapiti

Camera Club's darkroom had fallen through the ceiling of the main pottery room. Club member Bruce Young said that at a conservative estimate, about \$10,000 worth of darkroom equipment went up in smoke. Mr Young said only their equipment was insured.

Another member said between 200 and 300 people would be affected by the fire, as the building was in constant use by all the clubs.

DEC 1988

### Kapi-Mana December 1988

At 11.00pm 26 December 1988 a disastrous fire virtually destroyed the Gear Homestead Annex building. The fire was noticed by a passing police patrol who called the Fire Brigade. It took nearly half an hour to bring the fire under control. When the building had been refurbished it had been lined with ply wood from car crates donated by Todd Motors. It could be argued that it was these highly inflammable linings that added fuel for the



flames. The fire was initially treated as suspicious by the Police but after extensive enquiries the actual cause was never established.

The fire began downstairs in the Potters "area" incurring damage estimated to be \$45,000. Our share was to amount to \$10,000 where half of the upper floor had collapsed into the Pottery studio.

One piece of fortune was the building's cladding, a very thick galvanized steel originally manufactured in Germany a century earlier survived.

Paid up Insurance on all internal assets meant that full value compensation could be obtained, however, as the cause of the fire could not be determined it took over three months to settle.











### Rebuilding the rebuilding

Joe Ten Broeke, Albert Adams, Trish Pointon, Ken Browne, Chris Marshall, Geoff Marshall and Pat Wooton.

The rebuilding phase involved heartbreaking work by a team under the then president Dennis Crib, which removed the charred timbers before Joe Ten Broeke led a small team of members rebuilding the darkroom/kitchen end of the attic. Ken Browne did a remarkable restoration job on the club's enlarger, which had been through the fire but was still basically sound.



The “second” refurbishment also exceeded expectations, and the building was relined with fire retardant gib, skylights were fitted, a new kitchen and fresh carpeting were installed.

Meanwhile the club was forced into exile at the nearby Aotea College’s staff room until the renovations were completed.

Insurance payout to KCC for losses totaled \$10,160.

The total Insurance payout, amounted to \$29,250, which included \$10,000 for the Attic Committee plus a donation from the Historic Places Trust of \$1500.

The PCC stated the shortfall between total funds received and actual cost of complete restoration of the woolshed be met by woolshed users.

By 19 Feb 1990 structural work completed.

Donation of \$5000 received from the Porirua Licensing Trust.

A combined Craft Fair raised \$3868.26

Money allocated to the tenants of the woolshed, the bulk went to the Potters and the Camera Club as they were the major losers.

After a large clean up, the groups using the upper floor embarked on an intensive two year fund raising campaign by members and spent every weekend over an eight month period, working to develop the woolshed Attic into a valuable facility.

In an application for Financial Assistance to the Porirua Licensing Trust the following accompanied the application –

“The Kapiti Camera Club is a well established club founded over 20 years ago, draws its members ship from a wide area with the

majority coming from the Porirua – Pukerua Bay basin – the club has a membership of 35.

They are a prestigious photographic club with a high profile. Some of the country's top photographers belong to the KCC, exhibiting nationwide.

NEW ZEALAND  
INTERNATIONAL

---

SOUND - SLIDE  
EXHIBITION  
OF  
PHOTOGRAPHY

*Organised by*  
WAIKATO PHOTOGRAPHIC SOCIETY

*see some of the  
WORLD'S BEST  
PROGRAMMES  
of photographs with sound*

\*Travel                    \*Story and Song  
\*Nature Study        \*Humour  
                                 \*Documentary

---

GEAR HOMESTEAD ATTIC  
(Kapiti Camera Club)  
Gear Homestead/Dkowai Road/Porirua  
(Opposite Aotea College)

Tuesday 2 August, 1988 - at 7.45pm

Admission: \$3.00

The club has hosted touring exhibitions and leading International Photographers, conduct classes for the WEA Community Education as well as their own comprehensive programme. They have made their facilities available to the Aotea College Photographic classes and entertained patients at the Porirua Hospital with slideshows. Members provided the slides and photographs for the 1989 Combined Schools Calendar sold by local schools to assist them with their fundraising”.

1989 marked a special year for Neil Penman who was the outright winner of the Listener/Agfa Holiday Photographic Contest. The prize – a photo safari travel package anywhere in the world and valued at \$10,000 was donated by Agfa-Gevaert NZ. Neil also won an Olympus AZ300 in the family section. This is probably the biggest photo contest prize offered in New Zealand and as a club member pointed out, outranks such literary awards as the Wattie and Booker contests. But then, they don't attract thousands of entries. There were 600 entrants and 30,000 photos.

Apart from Neil Penman's outstanding success there followed a 2 year hiatus. Cable release had “done it's dash” and was discontinued after nearly twenty years of regular distribution. A new newsletter was published for a short period as the Kapiti Camera Club Newsletter. The edition dated April 1990, proclaimed that it was nice to be home again in the Woolshed Attic from the temporary residence of the staff room at Aotea College. It admitted to uncertainties following the fire at the Attic clubrooms, and that now we're back under the old roof there is time to regain momentum, build up club night attendances and membership under the leadership and guidance of Geoff Marshall and vice president Joe Ten Broeke.



In July 1990 the Kapiti Camera Club threw a surprise party for Edith Beck (one of the early members of the Kapiti Camera Club) on the occasion of her 80<sup>th</sup> birthday. Nearly a third of the individuals in this photo are still active members 20 years later.

Back row (left to right), ?, Geoff Marshall,(obscured), Eric Honey, Arthur Wong, Tim Smith, Joe Ten Broek (obscured), Ross Williamson, Patsy Williamson, Mike Harper, Margaret Brown,?,? Carolyn Wallace, ? ,Anne Loveridge, ?

Front Row (left to right) Dennis Hamblin, Edith Beck, Brian Seach, Michael Parrott and Destina Munro.

## 1990 Competition Winners

Colour Print of the Year	Jim Howell
Monochrome Print of the Year	Neil Penman
Slide of the Year	Jack Ayliffe

Times were changing and it was obvious that the club needed fresh impetus and leadership and a review of it's procedures and format. This accounted for a change in the traditional competition points system, whereby awards are divided into Honours, Merit and Commended. This simplified the complex system of awarding points through participation and results.

During 1992, a statistical "break-down of KCC members was carried out with interesting results. Survey contributed to by 38 members.

60% class themselves as improvers

- 6 members are in the advanced category

- 4 are beginners

- 4 are semi-professional

9 members own auto-focus SLR's

60% own manual SLR's.

members own medium format cameras

1 has a field/view camera.

25% own more than one type of camera.

Most members use colour print film

Next most popular medium is transparency film.

14 members have their own darkrooms.

Most popular activity was outdoor/landscape (involving club outings).

1991 club purchased a set of studio lights for \$312 and a club camera for \$375.

Camera House offering 10% discount with proof of membership – also offering a monthly prize for a picture of the month which was displayed in their shop window.

1991 Presidents Report (Geoff Marshall)

The club returned to the partly restored attic clubrooms and throughout the year additional work was undertaken. The club now has better facilities than before the fire.

Motion was put before committee that the term of president be limited to one year, and the position of immediate past president be created. The role of the immediate past president would be to act as advisor on the committee.

Benefits:-



- fresh ideas from a fresh president
- the opportunity for more members to benefit from being president- one person could not dominate the club for several years.
- An outgoing president could stand for the position a year later
- where a president had club support for an extended term of office, a motion could be introduced to ratify the decision.
- by creating the position of immediate past president the continuity of the committee would be protected.

The motion was voted on and lost...

1992 Page 90 exhibition. Called for portfolios, essays or themes old and new suitable for exhibition purposes. A minimum of 4 and a max of 10 limit was set – exhibition was for Wellington women photographers.

1992 President's Report – presented by Eric Honey

Club Photography is alive and well and residing at the Gear Homestead in Porirua. In the past financial year KCC has:-

- increased membership from 30 to approx 50
- purchased a 35mm SLR club camera
- installed new equipment in the darkroom which now has

- four enlargers
- colour processor
- dry mounting press and
- mount cutter
- bought two halogen lighting units for studio photography
- added books to the club library which now has a nominal value of nearly \$1000

Jim Howell, winner of the trophy for the best colour print of the year became a Fellow of the Royal Photographic Society,

Neil Penman won the club's monochrome print of the year award.

Lily Gaunt won the colour slide section.

School boy member Brett Beaumont the National Ronald Woolf Memorial Youth Award.

March 1992 A special AGM was held to promulgate a set of rules for the club and a mission statement released:-

***“To provide an environment which will enable people of all ages to derive the maximum personal satisfaction from active participation in recreational photography”.***

This was to provide a focus for club activity and although not exactly a new direction it was a direction... and helped to

“broaden out” club activities especially with the fast approaching digital age.



**Edith Beck with Eric Carter, president of the Photographic Society of New Zealand.**

## Tawa woman wins photo award

**Edith Beck of Tawa has won the Kapiti Camera Club's Landscape Competition with a slide of Canada's Lake Louise.**

Four of the seven award winners in the club's 1992 competitions joined the club in the past two years.

The Monochrome Print of the Year trophy was won by Glen Bittle, slide of the year was the work of Lily Gaunt, the Bushby Cup for the best child study was awarded to Margaret Brown and Kim Dobchuk was joint winner in the animal study section.

Over the year, membership had increased by 50% and peaked at 60 members.

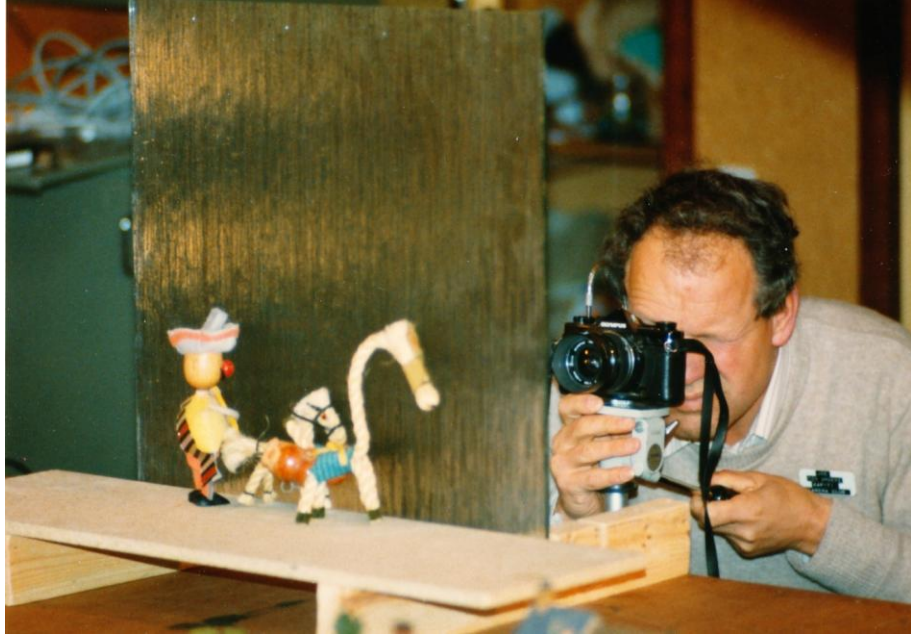
Introduced quarterly “salons” with honours, merits and commendation awards which encouraged members participation.

Mounted eight photographic exhibitions in the City's Page 90 gallery.

November 1992 – a professional model was photographed in the club rooms, members attending this session paid \$5 each to help defray costs of hiring the model. This session was deemed hugely successful.









In house photo shoot in the early 90's before digital imaging "took over".

### **Digital Imaging.**

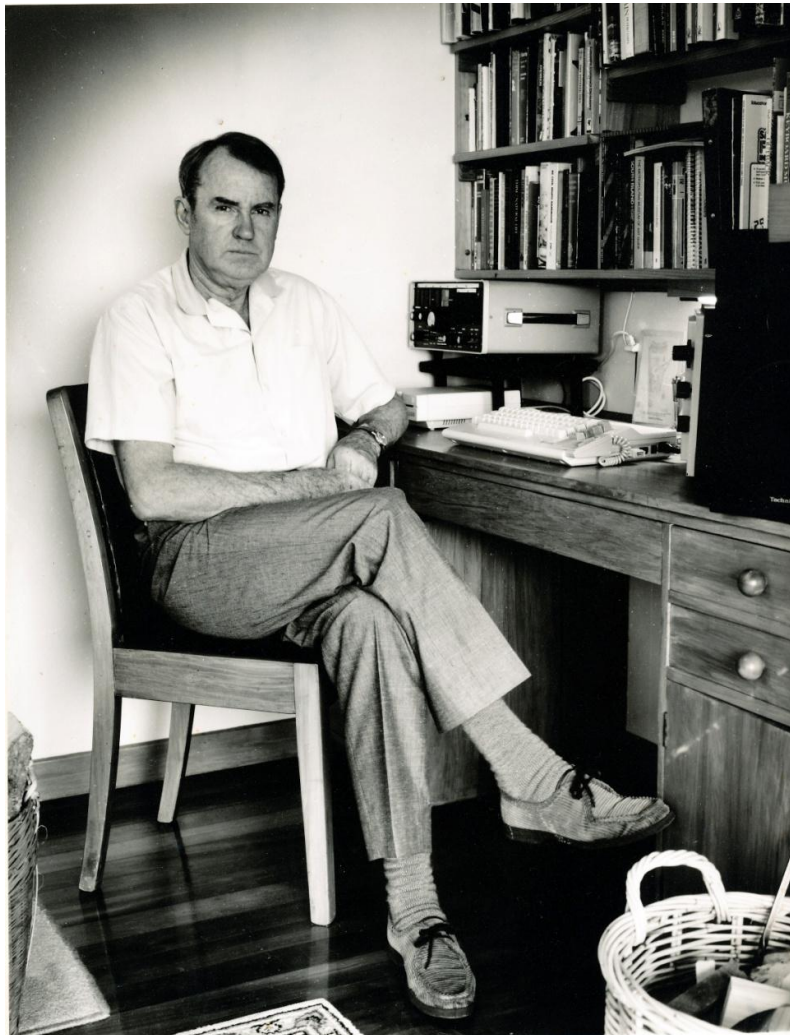
1993 brought rumblings of concern particularly to the "older school" film devotees and although digital imaging began slowly enough it soon gathered momentum as the technologies improved.

KCC members are among the first to experience Kodak's newly launched photo technology. John Wiltshire of First Choice Photos brought a Photo CD demonstration unit to the clubrooms and explained the basics of the system that transfers colour



photos to the television screen. Photographic images from standard film are transferred to CD disks which may be played on a compact disk unit linked to a TV screen.

The club boasted 60 members (including life members). This believe it or not posed a problem for the committee and it was discussed closing down membership applications if numbers reached 80.



A digital darkroom..



1994 Edith Beck was made a life member.

15/16 October 1994 the Central Regional Convention was organised on behalf of the Photographic Society of New Zealand by the Kapiti Camera Club as part of the club's Silver Anniversary Programme. This was a challenging assignment for a club whose PSNZ involvement was at a low level. In addition, more than 70% of current members joined the club since 1990. In this time it has doubled in size and is now one of the largest in the country. To

cater for the needs of newcomers to the club and to photography the focus has been on club and community activities.

The theme was “Make the Kapiti Connection”.

The convention made a net surplus of \$3760.67 which was distributed 50/50 to PSNZ and the Kapiti Camera Club.

A “debrief” and paper submitted following the Convention was revealing –

**Planning** A group of club members attended Saturday sessions in Foxton.

**Consultation** with the PSNZ convention manual provided the frame work.

There were difficulties in estimating numbers and the date conflicted with a south island convention.

Estimated that 60 - 80 could attend, but at closure of registrations only 41 had signed up.

**Programme** - followed traditional patterns, but several changes were made later.

Kodak provided valuable sponsorship – supplying disposable point and shoot cameras and products to the value of \$150 in prizes.

**Venue** – Aotea College met all the PSNZ requirements.

**Accommodation** - Aotea Lodge

A well written comprehensive convention report from Michael Clements was filed in club records for future conventions.

Notes:- The KCC hosted the 1985 convention, but membership had changed drastically since and very few have experience of organizing, or even attending – a regional convention. Sadly there have been no further club involvements with these conventions.

1994 marked the Silver Anniversary of KCC – the club has six trophies for annual competition.

The awards and recipients for the club's 25<sup>th</sup> year

Colour Print of the Year	Trish Pointon
Slide of the Year	Lynette Mill
Monochrome Print of the Year	Ken Browne
Landscape/Coastal Trophy	Bruce Young
Animal Study (Bushby Cup)	Eric Gaunt
Child Study (O'Shea Cup)	Trish Pointon

As 1994 marked 25 years which co-incided with Women's Suffrage Year KCC held a special Woman Photographer of the Year. This attracted a large number of entries from within the ranks of our ladies and the woman photographer title was won by Carolyn Wallace of Plimmerton, runner up was Julie Lackner and the best individual print – a Merino Ram's head was the work of Margaret Brown. For most of the entrants in the competition, photography is a relatively recent leisure activity. Several had taken college hobby courses, some conducted by well-known local photographer, Neil Penman. Club membership offered an opportunity to further their interest and experience. Club participants included Margaret Brown, Jenny Campbell, Julie Lackner, Trish Pointon, Carolyn Wallace and Tracy Waters.





Edith Beck "cuts the 25th Anniversary cake.

1995 KCC exhibit in the North City Plaza Expo –

Also launched an interesting community concept entitled “what were you doing on 14<sup>th</sup> October?” the day chosen for a Portrait of Porirua aka A Day in the Life of Porirua”. The concept was to photo people .... Doing things – Pictures were then selected for enlargement for a series funded by the Community Arts Council; to the tune of \$500. (also the exhibition of the final 20 – 30 prints were exhibited in Porirua’s sister city Nishio in Japan in early 1996).

1995 Extract's from the President's Report – presented by Michael Clements

“Our members are the life blood of our club, and it is pleasing that they are really enthusiastic and helpful. At the time of writing this report we have 54 members. Our meetings average over 30 members, and this is encouraging for our speakers and for the committee. I would like to urge our members to continue to be involved in all meetings where possible.

The year composed of guest speakers on the first Tuesday in the month and an activity on the 3<sup>rd</sup> and 5<sup>th</sup> Tuesdays. Amongst the guest speakers and judges were: Hugh Best, Neil Penman, Eva Yocum, Barry Clothier, Graeme Browne, Bruce Young, Martin Stewart, Peter Bush, David Daniels, Grant Sheehan, Helen Mitchell, Ken Browne, Tracy Waters, Trish Pointon and Bill Main.

We also had a ferry trip to Days Bay and a Rimutuka Park afternoon. The main event of the year was the Regional Convention which the Kapiti Camera Club organised. One experienced photographer commented that it was the best she had yet attended. The Audiovisual Exhibition held on the Saturday night was not that successful, but never the less was enjoyable.”

#### Trophies 1995

Colour Print of the Year	Margaret Brown
Monochrome Print	Geoff Marshall
Slide of the Year	Lynette Mill



Child Study

Ian Milton

Landscape

Eric Honey

1996 25 November – extract from The Evening Post

A Day in the Life of Porirua -

A Day in the Life of Porirua will go global at the World Festival in Nishio, Japan next week thanks to the Kapiti Camera Club.

50 club members and Wolfe Photography photographers spent 24 hours last year capturing the essence of Porirua. Sam Hunt carrying flowers, Porirua's first garage being demolished, John Burkes reflection as mayor and the armed offenders squad practicing at the Police College rifle range were among more than 500 images caught on film.

35 of these were chosen for a display at Page 90 Art Gallery that ended on November 17.

The exhibition attracted a lot of interest, with Porirua residents recognizing local people and their city, Kapiti Camera Club president Michael Parrott said.

The exhibition is now on it's way to Porirua's sister city, Nishio where it will be displayed at the precinct's World Festival.<sup>1</sup>

There are now plans for a Day in the Life of Nishio photo exhibition in Porirua.

Mr Parrott said the Portrait of Porirua photos and the club's current project – to take photos of developments in Porirua over

---

<sup>1</sup> See Appendices for a cross section of images forwarded to the exhibition.

the next three years – would be donated to the Porirua Museum achieves.

1996 A meeting of members of the Kapiti, Levin and Waikanae Camera Clubs took place. Each club to make a presentation on a topic of photographic interest (operational or technical) at the outset. 15 minutes target to a maximum of 20 minutes – then leave reasonable time for the membership to get together and exchange ideas on activities and interests that may stimulate new initiative in our clubs.

Presentations were allocated for the competing clubs as follows:-

Levin Self Assignments

Waikanae Photographing Wild Life and some lessons learnt.

Kapiti Club Project – “Portraits of Porirua”.

A grant of \$500 was allocated to the Kapiti Camera Club from Creative Communities New Zealand Porirua Local Funding Scheme allocations.

A field trip to Parliament took place on 9 June 1996. This required permission of the Speaker of the House.

1996 Eric Honey nominated for life membership

The In-house newsletter Kapiti Focus distributed in November 1997 commented that it was pleasing to see member’s photos published in local tabloids – it came as no surprise to see Neil Penman’s work published. Geoff Marshall’s work is often

published in magazines as well as local council outlets. Bruce Thompson's sporting photos are often in the Kapi Mana News, Joe Ten Broeke has had his work in the Kapi Mana News also.

What came as a surprise was Joe Ten Broeke's photo essay in Photography International magazine on the club's trip to Akaroa last year.

1997 saw some real in-depth thinking and a club three year business plan presented.

- the committee needs better contact with membership – surveys/questionnaires don't cut it.
- need to attract new members – 15 – 25 year group
- only a third of membership were active in photography – the rest photography is not their primary interest.
- retain existing membership and encourage participation.
- encourage buddy system
- plan a major trip and project each year
- establish closer relationships with other clubs and possibly share speakers.
- photographing students – Polytechnic, Whiteria night classes can get involved.
- Have a president's challenge – this can be anything photography related.

Also out of this came some sage advice for “beginners” and “old hands” alike.

Satisfy yourself first – then enter club competitions.

Always remember that the Judges opinion is the Judges opinion and the next Judge will see your work in a different light.

Today you win – tomorrow you don't get an acceptance.

Develop your own style

If it ain't on the negative – it ain't on the photo.





Christmas Party 1997

### Trophies for 97/98

Best Monochrome Print	Lynette Mill
Best Colour Print	Michael Parrot
Best Slide	Lynley Lake
Calendar Series	Neil Penman

Subs	\$43	individual
	\$65	two members of the same family
	\$21	student (under 21)



September 1998 IRIS (of Kapiti Focus claim) tributes women in club photography as follows:-

“Kapiti has recognized the importance of woman in club life since day one. Not just in front of the camera but behind the lens – and on the administrative side too. The formation of our club owes much to the enthusiasm and energies of David and Carol Holt, later to become joint life members.

In the early days Gloria Bushby was a tireless innovator and with her mother, a regular competitor – we have the Bushby Cup for Child Study. Club photography has provided a rewarding hobby outlet for several couples, among them Eric and Lily Gaunt who both became committee members. Mary Callaghan joined KCC to support her husband, Les, in his retirement hobby. She consistently outclassed him in club competitions.

There were the Cassells. Richard arrived from England on a computing assignment in mid 1985. They were relatively new to photography and Julie, a beginner, was placed in C Grade. That year, in the points competition which she joined when it was half way through, Julie won the C Grade colour print section, and was placed third in both C Grade monochrome print and slide categories and wait for it ... won the slide of the year trophy.

Sometimes individual memberships developed into partnerships. Vice President Julie Lackner might have become the club's first woman president if she hadn't been lured away by fellow committee member John Rogers, a keen yachtsman. They sailed away into the sunset.

Another notable husband and wife team has been the Penman's. Though June was not officially a club member she took on the job of Secretary/Treasurer and saved the club from being wrecked on the secretarial rocks. Many successful women club member's were graduates of Neil's photo courses at Aotea College.

Now we have a newer husband and wife partnership, Lynley and Philip Lake – who have taken on the Secretary./Treasurer role and are very active in club activities.

Women, individually, have been important in club life. Long serving life member Edith Beck has combined extensive overseas travel with colour slide coverage. We have envied Carolyn Wallace's beautiful prints of places as far apart as the Middle East and Vietnam.

When the club marked the International Year of Women, Carolyn won the woman photographer of the year competition against stiff opposition among them Margaret Brown who has demonstrated remarkable 'flower-power' in her photography.

Increasingly our women members have done well in outside competitions and some have turned professional. Ex-member Trish Pointon is now an established wedding photographer. Jenny Campbell (whose mother, Pat Reesby, had been a club member) specializes in professional animal photography.

Women have taken most of the club's silverware – among them Lynette Mill, now living in the Hawkes Bay, who lifted our sights – and some major awards – in the flagging colour slide field.

But there is one pinnacle to be conquered. Though the ability to handle the job is there, a woman has yet to hold the post of President.”

It was also in the year 1998 the club embarked on the Pukerua Bay project assisted by a grant of \$300 from the Porirua Community Arts Council with the objective of providing 40 prints 16 x 12 for the Porirua Museum and Art Gallery for an exhibition running from 1 February to mid April of People, Places and Happenings in Pukerua Bay.

1999 The following is the text for the Canopies exhibition, presently on display at Pataka.

“The canopies exhibition is the Kapiti Camera Club’s winning exhibition at the 1998 Photographic Society of New Zealand’s Regional Convention. For the competition the club decided on a local theme. This needed to portray Porirua, as the club is based in the Gear Woolshed Attic. The canopies theme was selected, as the canopies are an important part of the city centre.

The winning series took first place in the Interclub Print competition and was sponsored by a grant from the Porirua Licensing Trust. The Kapiti Camera Club whose work is on display are:- Neil Penman, Arthur Wong, Bruce Thompson, Geoff Marshall, Roy Walker, Peter Lang, Ken Browne, Dennis Hamblin,, Michael Parrott, Michael Clemens, Clayton Tume, and Kath Craig.”

It was during 1999 the KCC had a minor hic cup in that the club was unable to elect a President or Vice President. Other

committee positions were filled, but no one was prepared to “step forward” for the presiding positions, giving rise to something of a perceived crisis, although given the commitments of many of the members, perhaps not surprising. It seems to be a symptom malaise – even a signal that we need to seek new directions to ensure the club’s survival and further development.

This resulted in several former presidents being co-opted to join the committee with the intention of resolving the situation. When the going gets tough, the tough get going and up step Neil Penman, Michael Parrott, Ian Clark and Michael Clemens. It also involved a questionnaire sent out to all members asking about their intended level of participation forming the basis for an assessment of the club’s future direction.

This also co-incided with the Porirua City Council formulating a strategic plan... and inviting interested groups to have a say

What would you like Porirua to be/have achieved in 10 years time?

What could your organization/group or sector do to help achieve these goals?

What do you think other groups/sectors do to make these things happen?

What might make it difficult for your group to do it’s bit?

What could be done to overcome these barriers?

What actions could your group take to help market Porirua?

Peter Lang, immediate past president was “familiar” with business plans and projected goals of organizations had some interesting observations and recommended the KCC seize the

opportunity as a catalyst for the development of our own plans - one of the key questions was how can we maintain our membership in the face of organizations with similar interests, such as travel clubs.

Late in 1999 Dennis Hamblin (as part of the committee) proposed he make exhibition frames for the club. With the assistance of Ross Williamson (a club member who was a professional picture framer) constructed 90 frames to house the standard size exhibition mounts of 16 x 20 inches. This was an inspired decision as these frames have given many hours service to the better exhibiting of club photography at many exhibitions and continue to be used to this day...

Another tradition was formed that year when it was decided to make a presentation of a bottle of wine to guest speakers .

The year 2000 marked another milestone in the club's history. This one involved an internal dispute between members of the club executive and dragged several other member's into the squabble with perceived legal threats, possible accounting discrepancies and outrageous requests for compensation. Of necessity the names of the main protagonists are not recorded here but are available to the inquisitive filed in the Attic cupboard.

I have attempted to record this affair impartially as possible. The details have been gleaned from minutes of meetings and letters drawn up by both parties. The affair blew up when two ex-members, (a husband and wife) expressed dissatisfaction with the club's committee, over what was perceived as an incomplete, unbalanced and unaudited set of accounts presented at the AGM in March 1998. The friction created by this led to some heated



exchanges whereby no one was prepared to step up for president's nomination and accordingly no one was elected to this position. Several reluctant members agreed to form a committee where it was hope the matters under dispute could be resolved and through the passage of time get things back on an even keel. The then "acting" previous president Peter Lang agreed to carry on for a while, and in June 1999 a committee member around whom the dispute was gathering momentum assumed the role of President. Peter Lang then resigned on a matter of principle.

The beginnings of the dispute probably arose when the club became involved in a major community project grandly entitled the **Plimmerton Millennium Photo Shoot** where the club undertook to take on the Snapshot of Plimmerton as it was the dawn of the new millennium. Eleven club members participated and the results were placed on display boards and exhibited in the Plimmerton Pavilion where it was so well received by the locals that several extra exhibitions were completed, including an exhibition at Pataka. Sponsorship was forthcoming from The Plimmerton Millennium committee, Licensing Trust, Wellington Photographic Supplies for concessional rates and quality processing. The KCC involvement in such projects gives the club a higher profile and enhances its reputation as a community based local organization with a wide range of photographic skills and administrative capabilities.

Although on the surface everything seemed tickity boo, underneath particularly at committee level the project created unnecessary friction and disagreement developed between the various committee members and also regrettably other members of the club got caught up in the dispute.. Meetings were called of

some, but not all of the committee to resolve issues, but the new president refused to take part in these. Accusatory statements were made and letters written. A huge spat, which made a lot more of what the situation demanded. There were two interesting theories raised later in hindsight that may have been contributory factors in this dispute

- (a) The secretary/treasurer correctly queried out payments that had not been authorized by committee.
- (b) The President (married to the secretary/treasurer) naturally took her “side”.
- (c) This highlighted an internal unforeseen problem – that the top three executive position in the club were held by a husband/wife combination.

At the AGM on 2000 the president chaired the meeting, but noticeably the treasurer/secretary did not attend, and once again there were problems in balancing the accounts, which had not been audited.

At that meeting Tim Smith was elected President, Denis Hamlin as secretary and a new committee were found.

The minutes of that meeting were taken by Tim Smith. At the meetings conclusion the chairman lifted the draft minutes from the table in front of Tim and declared that it seemed the club does not want us – and left the club rooms in a state of stunned silence.

A copy of those minutes has not been sighted since.

It was with difficulty the club records/book were retrieved from the ex president and secretary. They paid no subscription for the year, and although not expelled, were assumed to be no longer

members having not paid up their due subscriptions. They had clearly lost the confidence of the membership. Neither stood for re-election but continued as a self elected 'committee in exile' attacking the new committee and selected members through a poorly advised campaign of letter writing direct to members. Naturally this put the newly elected committee on the defensive and clearly a legal battle was looming.

The protagonists were quick to point out they felt ignored by the committee and getting negative responses when they attempted reconciliation. They referred to another incident seen as a negative when the club declined their contributions to an exhibition at Pataka (except for one small print hidden in an obscure corner of the gallery). This was considered a deliberate slight and the image was removed by the photographer from the exhibition without consultation with the committee or with Pataka.

Legal noises were then threatened as to seeking compensation. These included compensation in the form of a replacement exhibition at a venue of their choice (preferred Dowse Museum, Lower Hutt or the Wellington City Gallery Photo space). The club would pay for gallery costs as well as enlarging and mounting costs. They also requested continual use of the club's darkroom facilities which they had lost as a result of the unconstitutional expulsion, or alternatively the club could contribute to their costs of setting up their own darkroom.

The club then realised this dispute was not going to go away and needed to respond with a heavier hand by threatening legal action of their own.

The club reciprocated with a legal letter personally delivered to the alleged aggrieved party with a committee joint resolution that a full public retraction and full public apology was required within seven days of the receipt of the letter – dated April 2000. The retraction was in response to an open letter dated 3 March written on Kapiti Camera Club Letterhead, addressed to all members of the club issued without committee knowledge or approval, and the apology shall be in respect to the misinformation and accusations contained in that letter.

That was followed by a further series of letters (all becoming rather tiresome from both sides) ending with new President Tim Smith attempting reconciliation by inviting the alleged aggrieved parties back to the club. They declined.

It did not end there – the aggrieved members submitted a case for unfair treatment against the club before the Disputes Tribunal. Tim Smith in his role as President together with the newly elected secretary Dennis Hamblin were summoned to attend before the tribunal in Wellington to defend the charge on behalf of the club.

For some unknown reason the other party went to the Court at Porirua, the wrong venue, leaving Tim and Dennis (and the Court Officials) cooling their heels until the misunderstanding could be sorted. When the alleged aggrieved party eventually arrived at the correct venue, the case proceeded but because of what happened, the case against the Kapiti Camera Club was presented in an agitated, frustrated and angry party, and the case was thrown out.

Several club members who had resigned over this fiasco, were enticed to return to the club.

Serious damage was done, and a slow recovery began.

One of the first – was a rethink (and some rewriting of the club's constitution) effectively reducing the administration down to a size where flexibility is achieved and action takes place and not inertia due to a lack of a quorum. Several amendments were put to the AGM in March 2000.

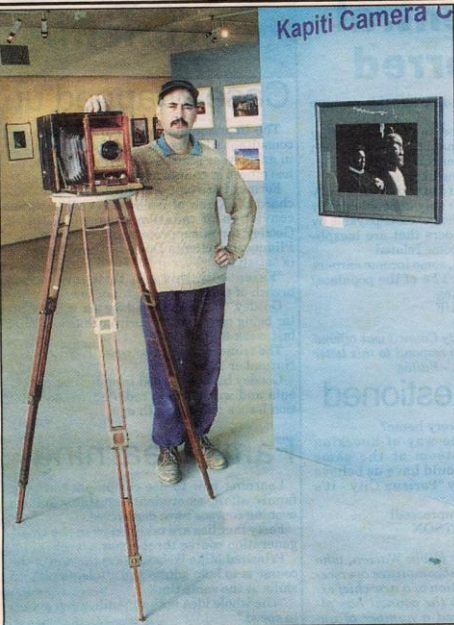


Photo: Simon Havton S1001

**ANTIQUÉ CAMERA:** Photographer Clayton Tune stands beside his antique Cirkuit panorama camera.

**Images on show**

Kapiti Camera Club's annual exhibition is on display at Pataka Community Gallery until June 4.

Club secretary Dennis Hamblin says the exhibition displays 100 selected works from members.

They include prominent local photographers Clayton Tune, whose work has appeared at the National Photo Gallery, Michael Parrott's dramatic landscapes and Neil Penman's portraits of students returning to Cannon's Creek School.

**BANI WIT**

Moisture in the home the Building Research also say that moisture that is why the staff a high quality ventilati

Appeared in the Porirua News 31 May 2000



The rebuilding of the club included a field trip to Kapiti Island in 2001.

In 2003 the Kapiti Camera Club won the interclub battle.

They received a grant of \$6,500 from the Community Trust going towards the 2004 PSNZ running costs. The KCC involvement with the PSNZ Conference was significant also with a reciprocal agreement with Mitsubishi NZ for some car photography in return for a loan of vehicles for the conference.

**INTERCLUB BATTLE**  
Hosted by  
**KAPITI CAMERA CLUB**

**TUESDAY 17th August 7:30pm**  
**At St Mary's Church Hall**  
(and its new and warm)  
Entrance to Whitby Village Centre  
Discovery Drive WHITBY

Rules for Entering:

- Prints only, no slides or digital image projection
- Judges decision final—no *written* correspondence will be entered into
- Prints to be sized between 6 x 9 and 12 x 18
- All Prints to be mounted
- There will be a total of 12 rounds
- 8 rounds will be selected from the following list of 16 topics

Kites	Bloopers
Native Birds	Neon Advertising Lights
The Beach/Sea Shore	Photo Journalism
Children	Ancient
Amusement	Performing Arts
Wind	Night Light
Subject Movement	Flowers
Shopping	Sport

 4 rounds will be selected from the judges **own** mystery topics.

 No unfair influence may be placed on the judge

 You must be prepared to have some fun

**SUPPER WILL BE PROVIDED at the COMPLETION of the BATTLE**

Would each Club please confirm it's intention to participate & an estimate of the numbers of members by the 30th July 2004 to

Yvette McDonald, email [dcmcd@xtra.co.nz](mailto:dcmcd@xtra.co.nz) phone 2347201

Invited Clubs:  
Lower Hutt Camera Club  
Karori Camera Club  
Waikanae Camera Club  
Wellington Photographic Society

In 2003 members of the Kapiti Camera Club provided images of houses in Plimmerton for the Porirua Historical Association's Heritage Month display sited in the North City Plaza. When the display was taken down the images were passed on to the Porirua Library's local history collection.

It took a couple of years, but finally the club was back on it's feet again and the following extracts from the president's report in 2003 presented by John Lawrence illustrates the positive mood.

"Isn't photography great? There is magic in capturing a moment in time, whether it is a news image, action, a family get together or an artistic creation. These images give the viewer the ability to look back in time and often trigger some form of emotion.

Photographs can shock you, make you laugh, cry, entertain and inform you. Photography is a wonderful medium to work with. I suppose that is why we as photographers partake in it. I know that is why I do".

There were several exhibitions by KCC members this year –

Dennis Hamblin was successful in gaining the People's Choice award at the Ron Woolfe Memorial Exhibition.

Michael Parrot had work exhibited at Six Degrees Café. Which was part of Grant Sheehan's Travel Photography Course. He also continued his Barrista Series and had images in an exhibition in Auckland.

Geoff Marshall had an exhibition at Pataka, Nishio – A Sister City. A great collection of images showing Nishio, Japan, a sister city to Porirua.

Neil Penman, one of the club's life members, was honoured when Pataka exhibited a retrospective of 20 years of his work entitled Find Your Own Shoes. This was truly a memorable and inspiring exhibition.

Cherillisha Silva had some creative black and white prints shown at the Academy of Fine Arts.

Clayton Tume also had his Bigshotz panorama images at the academy of Fine Arts and at Photospace Gallery.

At the request of the Porirua Creative Communities Trust, the KCC were asked to document four creative groups in the Porirua region. These were the Harakeke Weavers, the Model Railway Group, the Attic Artists and the Pottery Group. These photographs were used by the Porirua City Council to promote the regions diverse culture and arts".

### Interclub Battle subjects for 2003

Wrecks

Seaside

Triptych (3 pictures as one)

Flash (Not camera flash)

Sports Action

Teeth

Worn by Time

Fun

Food

Infra Red

Within 40cm off the ground  
Repetition  
Street People  
Chocolate box cliché  
Vertical Panorama

## Interclub battle subjects for 2004

Kites  
Native Birds  
The Beach/Seashore  
Children  
Amusement  
Wind  
Movement  
Shopping  
Bloopers  
Neon  
Advertising  
Photo Journalism  
Ancient  
Performing Arts  
Night Lights  
Flower  
Sport

2005 Purchase a new calibrator cost of \$250

March trip to Somes Island

Photo exchange with Canadian Photo Club

The president's report for 2005-2006 was presented by Peter Lang as acting President. He said in part "Committee member numbers were low and there was some difficulty with getting sufficient numbers to monthly meetings. This is a cause for concern leading to heavy workloads for those "active" committee members".

Meyricke Serjeantson started club web site.

Best Projected image: 2006 – 07

Best Colour Print

Best Black & White Print

Best Manipulated Projected Image

Margaret Low

Patsy Williamson

Mike Harper

Bill Gilbert

2007 started with Jo Thompson as President who owing to work commitments was forced to resign. Patsy Williamson moved into the role. This 'movement' amongst the committee executive seemed to work and once again the KCC pulled itself up and many members from this time are still present in the club, and still making an impact.

Club outings to Kapiti Island, Pukerua Bay, and a night shoot on Wellington Waterfront.

A club project was to prepare a slideshow about flowers and gardens for display at Pataka's Heritage exhibition.

The Festival of the Elements gave another opportunity for members to provide images to the Arts Festival organizers for a “contractual” fee.

There was some agreement about a name change for the club, following the Waikanae Club’s decision to change their name to the Kapiti Coast Photographic Society but after a series of discussions it was decided to retain the original name of Kapiti Camera Club and our club was reinstated as a Registered Society on the 23<sup>rd</sup> June 2006. Our number with the Ministry of Economic Development is 217994.

End of Year 2007 – 08 print/projected image judged by Simon Wolf.

Print:	Meyricke Serjeantson
Projected Image	Destina Munro

2008 Wellington Regional Print Battle hosted by the Kapiti Coast Photographic Society – categories

- Plumbing
- Clouds
- Night
- Abandoned
- Liquid
- Glass (Not reflective)
- Rocks
- One Tree
- Glint in the Eye
- Wide



Interior (Architecture)  
Orange

End of Year 2008 – 2009 Print/Projected images judged by John Lawrence

Best Print Open Novice      Evan Rait  
Best Projected Image Open    Denise Gandy

Best Print Open Experienced    Irene Callaghan  
Best Projected Open Experienced    Peter Horn

Extracts from the President's Report for 2008/2009 presented by Patsy Williamson.

“50 members

Field trips to Somes Island, Wellington Botanical Gardens

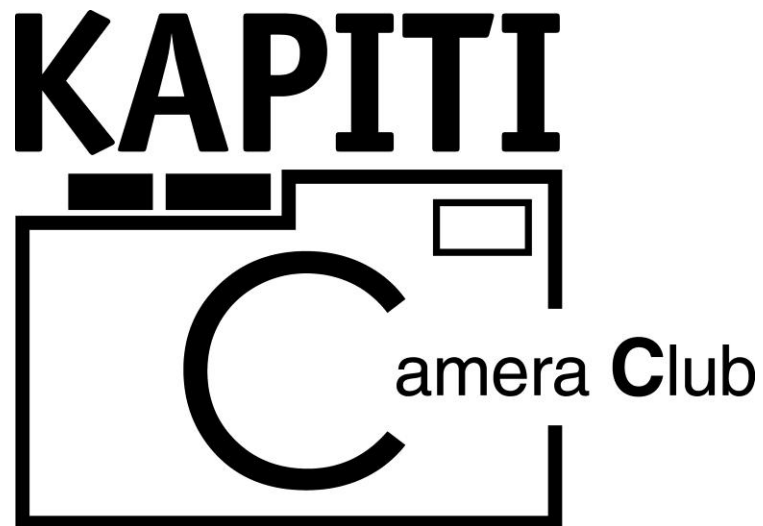
Club involvement with Festival of the Elements

Exhibition at Pataka on Heritage Month about “Inventions”

Made application for the club to be registered under the new Charities Act so as to qualify for a tax exemption and be eligible for grants. This was granted in November. This also necessitated a revision of the club's constitution and the opportunity to design a club logo.”



The display cabinets were provided by Joe Ten Broeke and vintage cameras displayed. A number of other cameras and photography paraphernalia were taken to the Ferry Mead Museum.



The New Club Logo

**INTERCLUB BATTLE**  
Hosted by  
**KAPITI CAMERA CLUB**  
**TUESDAY 18th August 2009**  
What Time 7:30pm  
Where **Te Wananga O Aoteroa**  
**Heriot Drive PORIRUA**

Ex Todd/Mitsubishi Motors Admin Building, Todd /Central Park. Opposite North City Plaza  
From the Motorway head across the Mungavin Bridge past first roundabout at the next round about turn left  
into Todd Central Park then Turn left which should take you to the building with the arrow.



**Rules for Entering:**

- Prints only, no slides or digital image projection
- Judges decision final—no *written* correspondence will be entered into
- Prints to be sized between 6 x 9 inches and 12 x 18 inches
- All Prints to be mounted
- There will be a total of 10 rounds

**Rivers and/or Water**

**Weather**

**Cats and/or Dogs**

**Natural**

**Illusion**

**Wires and Wood**

**Friends**

**Exposed**

**Oops**

**Yummy**

- No unfair influence may be placed on the judge
- You must be prepared to have some fun (this is to be a FUN evening not a serious one)

SUPPER WILL BE PROVIDED at the COMPLETION of the BATTLE

Would each Club please confirm it's intention to participate & an estimate of the numbers of members attending by the 31st July 2009 to

**Yvette McDonald, email [dcmcd@xtra.co.nz](mailto:dcmcd@xtra.co.nz) phone 2347201**

Invited Clubs: Lower Hutt Camera Club, Karori Camera Club, Kapiti Coast Photographic Society and Wellington Photographic Society.

18 August 2009 the KCC hosts the Interclub battle.



Members on Field Trip contemplate St Albans Church, Pauatahanui.



Spot the Kapiti Camera Club Member – on a Field Trip to Feilding Steam Museum.





Camera Club members



President Geoff Marshall

## Porirua Railway Station Upgrade

A decision was made to upgrade the Porirua Railway Station and work began through November 2010. The plan called for the subway to showcase almost 50 new panels showing over 100 stunning photographs that highlight Porirua's natural values and strong art talent by local photographers.

It was estimated that 1.3 million train passenger journeys are made from Porirua Station each year and naturally the subway attracted lots of commuters.



The Photographs for the panels were mainly sourced from members of the Kapiti Camera Club. The photo contributors were; Thomas Bonderf, David Driver, Denise Gandy, Don Laing, Neil MacKenzie, Geoff Marshall, Bob Maysmor, Taffy A Parry, Tim Smith and Mark Tantrum.

South Wall - Western End (8.71m)



Mock up – used during the design phase.

An interesting development from the KCC participation on the tunnel project is that the Porirua City Council were seeking an International award for the project and sought KCC's endorsement.



Porirua Rail subway – the final result was amazing.

The response from the President Geoff Marshall was “The Kapiti Camera club were very pleased to be invited to participate in the Porirua Subway project. It was a great opportunity for members to exhibit their work and to see it blown up to a size much larger than any of our previous exhibitions.

The photographs in the subway showcase members work very well and provides a talking point for local people using the subway and identifying with the images.

Visitors to the city have been impressed and we have had suggestions that the club should do the same for railway stations in Auckland”.

Another project undertaken by several club members was to photograph artefacts held by the Pataka Museum. An invitation was extended to all club members to take part in this project, and those who availed themselves of the opportunity found the task to be a challenging and rewarding experience providing challenges that lifted their technical competencies.

## **Taiwan Exhibition 2011**

It was during 2010, the KCC was invited to participate in the 2011 Kaohsiung International Photography Joint Exhibition and International Photographers Federation Academic Seminar.

Members whose work was selected for this exhibition were rewarded by a unique certificate of participation and a 150 page book with all the participating photographers work reproduced together with biographies of the photographers.

The Kapiti Camera Club shared in this unique honour with members representing the Wang-Jiao Studies of Photographic Art

in Kaoshiung, Perhimpunan Amatir Foto-Bandung, Creative Photographer Association, U.A.S., Jakarta Photopoint Photographers Community, Fujian Province Photographer's Association, Singapore Colour Photographic Society, Vancouver Art Photo Club, Asia Photographer Federation of Korea, Chinese Photographic Society of Hawaii and the Photographer's Association of Kaohsiung.

In all a very formidable, talented and progressive group. The Kapiti Camera Club was represented very well in this international environment and is able to hold their collective head high.





The Photographer's participating in the Taiwan exhibitions are Geoff Marshall (2), Ray Lovell, Peter Lang, Denise Gandy, Taffy Parry, Meyricke Serjeantson, Helen Westerbeke, Chris White, Yvette MacDonald, Tim Smith and John Coe.

Wednesday, August 17, 2011

Citylife Porirua News



PORIRUA ON SHOW: Installers set up the Kapiti Camera Club's photo exhibit at an international photography exhibition in Taiwan.

Photo: Supplied / CCN160811SPLtaiwan

## Photo opportunity

A chance meeting between two photographers at the Angkor Watt temple ruins in Cambodia last year led to a local camera club being exclusively invited to an international exhibition this year.

Kapiti Camera Club member Patsy Williamson found a kindred spirit in Mr Bo-Ching Sou, president of the Wang-Jiao Studies of the Photographic Arts in Taiwan.

The pair exchanged cards and promised to keep in touch.

Thanks to that meeting, her club was the only New Zealand photographic society to be invited to the International Photographer Federation and Joint Exhibition of International Photographers, which is sponsored by Mr Sou's organisation.

The exhibition, which finishes this month in Taiwan, promotes opportunities for international academic and cultural exchange of photographic art.

The invitation stated that Kapiti Camera Club's participation would make international photography of arts "more vigorous and splendid".

The club had to submit 12 images reflecting New Zealand cultural identity, scenic beauty and diversity.

Club president Geoff Marshall says it was an incredible honour and too good a chance to miss.

"The KCC has been operating in Porirua for over 50 years, and we've always prided ourselves in participating in the local community

events and have a number of enthusiastic amateur photographers who are always happy to display their talents within the photographic community.

"It presented a rare opportunity to represent Porirua (and of course New Zealand) in a different forum."

Images forwarded included two already displayed in the Porirua train pedestrian underpass, and several from the Porirua-sponsored Community Arts Programme run on Waitangi Day.

Another, by local Ray Lovell, featured a dolphin jumping in Dusky Sound, which had already won a 2009 *New Zealand Geographic* magazine Wildlife Photo of the Year.



## Bay Gallery, Plimmerton, Exhibition



**Top shots:** *Tranquility*, taken by Roger Beckett, is just one of the top-drawer photographs on show early next month at Bay Gallery in Plimmerton.

# In our view

By **KRIS DANDO**

You may have seen Kapiti Camera Club members at different events in Porirua over the years – now's the chance for them to shine in their own exhibition.

Showing next month at the Bay Gallery, Plimmerton, *In Our View* will comprise 30 photographs. Most are in frames, but at least one photographer is using an unusual medium – corrugated iron.

The club's secretary, Meyricke Serjeantson, says it "gives us a chance to hang our pictures on the wall" and show off their passion for the medium. While there are many local scenes and New Zealand flora and fauna – including Ray Lovell's spectacular 2009 dolphin photograph from Doubtful Sound – there are portraits and also a few arty techniques on show as well.

"We've been building up to this for three months. Our aim [in choosing the selected 30] was to not just choose the standard shots but things that really stood out. One of our members will be using the old salt technique and I guess it shows that people can be artists as well as photographers, there's plenty of imagination being used."

*In Our View* runs October 1, 2 and 8, 2pm till 4pm, 4 School Rd, Plimmerton.





Field Trip to Castle Point to view the sunrise...



Sunrise at Castle Rock - Photography by Evan Rait



**Photo fanatics:** Kapiti Camera Club members Peter Lang, Destina Munro and Steve Courtenay with some of the photos in the club's *Kapi-Mana Exposed* exhibition.

# Porirua in the show's frame

By **ANDREA O'NEIL**

Kapiti Camera Club members are celebrating everything Porirua in their annual exhibition and sale.

The title of this year's photography show is *Kapi-Mana Exposed*. It includes a range of interpretations of Porirua, from a four-metre long panorama of the city by Denise Gandy, to some abstract macro work printed on canvas by Destina Munro.

The exhibition will be held on the weekends of November 3-4 and 10-11, from 10am to 4pm, at Bay Gallery at 4 School Rd, Plimmerton.

The club's focus on its roots

comes at a time when its future home is uncertain – the club is based at the Gear Woolshed, which has been deemed unsafe and could be closed to members as soon as December 31.

Eleven members are exhibiting in the show, and there will be a slideshow scrolling through other members' work.

The club's 38 members meet every second week to compare work, discuss techniques and hear experts speak. This year they have organised field trips around the Wellington region, several at night to explore photography in the dark.

See [kapiticameraclub.co.nz](http://kapiticameraclub.co.nz)

## **And towards the future.....**

We have a unique “bond” with the Porirua City Council and are continuing to be invited to photograph the Festival of the Elements. This involves assigning members to particular areas of the Festival to ensure a full photographic record of the day. The resultant portfolios are passed to the Festival organizers for publicity purposes. The club has produced a slideshow of the “high lights” over the previous years, and this has featured at the Porirua Library during the Festival. A copy of the slideshow was compiled and produced by Tim Smith and forwarded to Taiwan, as an interesting sidelight to our club’s activities at the recent Taiwan Exhibitions in which we participated.

We have a web page at [kapiticameraclub.co.nz](http://kapiticameraclub.co.nz).

We are now involved with social networking through facebook and flickr.

We are actively encouraging new “younger” members to join our group.

A number of Special Interest Groups have been operating informally amongst our members –

Print Pals

Hot Shots

Landscape Lads (and Ladies)

Field Trip Followers

Competitions continue between clubs in the form of the interclub battle.

The KCC hold salons which are always well patronized, with selected judges volunteering from amongst the Wellington fraternity of professional photographers to individually critique all works submitted under four categories-

Subject	Experienced	Projected Image
Subject	Novice	Projected Image
Open	Experienced	Projected image
Open	Novice	Projected image
Subject	Experienced	Print
Subject	Novice	Print
Open	Experienced	Print
Open	Novice	Print

For a period Monthly challenges proved popular with the grand prize of a chocolate fish for the best digital image voted by the members.

Quarterly Critiques – nominated members act as judges and positively critique submitted images for appraisal.



Guest speakers continue to entertain, amuse and display their works.

These have included:- Amber-Jane Bain, Tonya Nobelan, Andrew Bolleneck, Grant Sheehan, Adrian de la Fuente, Fred Wooten, Bruce Girdwood, Simon Woolf, and Nick Servian.

Members themselves participate in show and tell sessions. These are diverse and may relate to recent overseas trips, special photographic techniques, or special portfolios of interest. Any aspect of photography may be debated with hands-on experiences discussed.

A new and exciting web site is being introduced with a “members only” section where our members can “exhibit” their latest photographic gems within galleries, advise and comment to each other within on-line discussion and debate.

Social interaction is important and many firm friendships have been fostered within the club.

## **Conclusion**

So there you have it.... On the time scale 42 years has passed us by, we've been there – done that. Our 50<sup>th</sup> birthday is a relatively short time away – so watch this space. Technology advances have been enormous, our membership has absorbed it all, we are in good heart and are fit in body, economically sound, due to the enthusiasm of our members – dare I say it..... stayed in focus - onwards and ever upwards - towards infinity and beyond.

To be continued.....



# Appendices

## List of Presidents

1969 Les Stone  
1970 David Holt  
1971 Leo Johnson  
1972 David Holt  
1973 Stuart Burfield  
1974 Bob Jackson  
1975 Bob Jackson  
1976 Jack Ayliffe  
1977 Jack Ayliffe  
1978 Mark Webber  
1979 Joe Ten-Broeke  
1980 Joe Ten-Broeke  
1981 Mark Webber  
1982 Neil Penman  
1983 Neil Penman  
1984 Allan Corry  
1985 Allan Corry  
1986 Joe Ten-Broeke  
1987 Geoff Marshall  
1988 Geoff Marshall  
1989 Denis Cribbl

1990 Geoff Marshall  
1991 Eric Honey  
1992 Eric Honey  
1993 Gary Pearson  
1994 Michael Clements  
1995 Michael Parrott  
1996 Michael Parrott  
1997 Allan Galbraith  
1998 Peter Lang  
1999 Phillip Lake  
2000 Tim Smith  
2001 Carolyn Wallace - (first lady president)  
2002 Jon Lawrence  
2003 Brian Seach  
2004 Jon Coe  
2005 Brian Seach/Peter Lang  
2006 Jo Thompson  
2007 Patsy Williamson  
2008 Patsy Williamson  
2009 Meyricke Sergeantson  
2010 Geoff Marshall  
2011 Geoff Marshall  
2012 Geoff Marshall  
2013 Destina Munro  
2014 Destina Munro

2015 Destina Munro

2016 Steve Courtenay

2017 Steve Courtenay

2018 Steve Courtenay

## Appendix of Officers

### **1969 Inaugural year**

President	Les Stone
Secretary	David Holt
Competition Secretary	Carol Holt
Treasurer	Ben Van Vlymen

### **1970 – 1971**

President	D R Holt
Secretary	E Willis
Competition Secretary	Mrs C Holt
Treasurer	D Porter
Committee	Miss C Bushby (Publicity) J Yarr

### **1971- 1972**

President	L E C Johnson
Secretary	L Stone
Treasurer	Mrs J Stone

### **1972 - 1973**

President	D R Holt
Secretary/ Treasurer	J Yarr

**1973 – 1974**

President	Stuart Burfield
Vice President	David R Holt
Secretary	Gloria Bushby
Competitions Secretary	John Hall
Treasurer	B en Van Vlymen
Committee	Leo E C Johnson
	Joe Ten Broeke
	Chris Chapman
	Eric Honey (Publicity and Newsletter Editor)

**1974 – 1975**

President	B Jackson
Secretary	J Hall
Treasurer	C Chapman

**1975 – 1976**

President	Bob Jackson
Vice President	Jack Ayliffe
Secretary	John N Hall
Competition Secretary	David R Holt
Treasurer	Mark H T Webber
Committee	Allan Corry
	Roy Dunbar
	Glenn Minshall
	Eric Honey (Cable Release Editor)



**1976 – 1977**

President	Jack Ayliffe
Vice President	John Hall
Secretary	Glen Minshall
Competitions Secretary	Lesley Minshall
Treasurer	Mark H.T. Webber
Committee	Roy Dunbar
	Pat Liss
	Brian Soloman
	Eric Honey (Cable Release Editor)

**1977 – 1978**

President	Jack Ayliffe
Vice President	Joe Ten Broeke
Secretary	Glen Minshall
Assistant Secretary	Peggy Maidens
Treasurer	Mark Webber
Competition Secretary	Peggy Maidens
Committee	Richard Gavey
	Alan Corry
	Albert Adams
	Eric Honey (Cable Release Editor)

**1978 – 1979**

President	Mark Webber
Vice President	Joe Ten-Broeke
Secretary	Arthur May

Assistant Secretary	Peggy Maidens
Treasurer	Bruce Young
Committee	Albert Adams
	Jack Ayliffe
	Alan Corry
	Eric Honey (Cable Release Editor)
Life Members	Mr Lee Johnson
	Mr D. Holt
	Mrs C Holt

### **1979 – 1980**

President	Joe Ten-Broeke
Vice President	Mark Webber
Secretary	Arthur May
Competition Secretary	Gordon Forbes
Treasurer	Bruce Young
Committee	Gloria Bushby
	Peggy Maidens
	Rennie Phillips
	Eric Honey (Cable Release Editor)
Life Members	Mr Lee Johnson
	Mr D. Holt
	Mrs C Holt

**1980 – 1981**

President	Joe Ten-Broeke
Vice President	Mark Webber
Secretary	Arthur May
Competition Secretary	Gordon Forbes
Treasurer	Bruce Young
Committee	Peggy Maidens Roger Everest Eric Honey (Cable Release Editor)
Life Members	Mr Lee Johnson Mr D. Holt Mrs C Holt

**1981 – 1982**

President	Joe Ten Broeke
Vice President	Mark Webber
Secretary	Arthur May
Competition Secretary	Gordon Forbes
Treasurer	Bruce Young
Committee	Peggy Maidens Roger Everest Eric Honey (Cable Release Editor)

**1982 – 1983**

President	Neil Penman
Vice President	Joe Ten-Broeke

Secretary	Arthur May
Competition Secretary	Geoff Marshall
Treasurer	John McLachlan
Committee	Alan Corry
	Janet Forbes
	Gordon McDonald
	Bob Maysmor
	Eric Honey (Cable Release Editor)
Life Members	Mr Lee Johnson
	Mr D. Holt
	Mrs C Holt
	Mark Webber

**1983 – 1984**

President	Neil Penman
Vice President	Joe Ten-Broeke
Secretary	Arthur May
Competition Secretary	Geoff Marshall
Treasurer	John McLachlan
Committee	Denis Allison
	Allan Corry
	Sue Crompton
	Janet Forbes
	Gordon McDonald
	Tony van Schooten

Eric Honey (Cable Release Editor)

Life Members

Mr Lee Johnson

Mr D. Holt

Mrs C Holt

Mark Webber

**1984 – 1985**

President Allan Corry

Vice President Joe Ten-Broeke

Secretary Peggy Maidens

Competition Secretary Geoff Marshall

Treasurer Denis Alison

Committee Vicki-Ann Stevenson (Archivist)

Heather Stevenson

Ray Bird

Ian Couling

Eric Honey (Cable Release Editor)

Life Members

Mr Lee Johnson

Mr D. Holt

Mrs C Holt

Mr Arthur May

**1985 – 1986**

President Allan Corry

Vice President Joe Ten-Broeke



Secretary	Peggy Maidens
Competition Secretary	Ray Bird
Treasurer	Denis Allison
Committee	Alan Bacon
	Des Dawe
	Michael Harper
	Eric Honey (Cable Release Editor)

**1986 – 1987**

President	Joe Ten Broeke
Vice President	Geoff Marshall
Secretary	Richard Cassells
Competition Secretary	Ray Bird
Treasurer	Denis Allison
Committee	Allan Bacon
	Pat Reesby/Campbell
	David Hines
	Ian Levet

**1987 – 1988**

President	Geoff Marshall
Vice President	Bruce Young
Secretary	Richard Cassells
Competition Secretary	Julie Cassells
Treasurer	Mike Harper
Committee	Alan Corry

Graham Peck  
Neil Penman  
Eric Honey (Cable Release Editor)

**1988 – 1989**

President Geoff Marshall/Dennis Cribb  
Vice President Des Dawe  
Secretary Allan Corry  
Competition Secretary Gary Pearson  
Treasurer Bruce Young  
Committee Eric Honey (Cable Release Editor)  
Les Austing  
Bruce Carey  
Bill Moller

**1989 – 1990**

President Dennis Cribb  
Vice President Des Dawe  
Competition Secretary Gary Pearson  
Treasurer June Penman  
Committee Sharon Bell  
Bill Moller  
Neil Penman

**1990 - 1991**

President Geoff Marshall

Vice President	Joe Ten Broeke
Secretary	Albert Adams
Competition Secretary	Tricia Pointon
Treasurer	Kath Craig
Committee	Des Dawe
	Jack Ayliffe (Cable Release Editor)

### **1991 – 1992**

President	Eric Honey
Secretary/Treasurer	June Penman
Competitions Secretary	Trish Pointon
Committee	Amanda McNeill
	Neil Penman
	Joe Ten Broeke
	Roy Walker

### **1992 – 1993**

President	Eric Honey (by consent)
Vice President	No nomination
Secretary	June Penman
Treasurer	June Penman
Committee	Roy Walker
	Ian Clark
	John Rogers
	Geoff Marshall
	Garry Pearson

**1993 – 1994**

President	Gary Pearson
Vice President	Eric Honey
Secretary	June Penman
Treasurer	June Penman
Committee	Glen Biddle Margaret Brown Julie Lackner Carolyne Wallace

**1994 – 1995**

President	Michael Clements
Vice-President	Michael Parrott
Secretary/Treasurer	June Penman
Committee	Margaret Brown Ken Browne Julie Lackner Trish Pointon Brian Tearle Roy Walker

**1995 – 1996**

President	Michael Parrott
Vice-President	Julie Lackner
Immediate Past Presiden	Michael Clements
Secretary/Treasurer	June Penman
Committee	Allan Galbraith

Ian Milton  
Trish Pointon  
John Rodgers  
Roy Walker  
Carolyn Wallace

**1996 – 1997**

President	Michael Parrott
Vice President	Alan Galbraith
Secretary	June Penman
Treasurer	June Penman
Committee	Carolyn Wallace John Rodgers Julie Lackner Ian Milton Peter Lang Jenny Campbell

**1997 – 1998**

President	Allan Galbraith
Vice President	Peter Lang
Immediate Past Pres.	Michael Parrott
Secretary/Treasurer	June Penman
Committee	Tim Belcher Fraser Jackson Phillip Lake Lynley Lake

Tim Smith  
Leah Wilson

**1998 – 1999**

President Peter Lang  
Vice-President Tim Smith  
Secretary/Treasurer Lynley Lake  
Committee Fraser Jackson  
Philip Lake  
Roy Walker  
Des Coote

**1999 – 2000**

President Phillip Lake  
Club Officers Peter Lang  
Tim Smith  
Allan Galbraith  
Lynley Lake  
Roy Walker

**2000 – 2001**

President Tim Smith  
Vice President Carolyn Wallace  
Secretary/Treasurer Dennis Hamblin  
Membership Secretary Mike Harper



Competition Secretary	Clayton Tume
Committee	Gary Pearson
	Mike Parrot

**2001 – 2002**

President	Carolyn Wallace
Vice President	John Lawrence
Secretary	Destina Munro
Treasurer	Tom Clark
Committee	

**2002 – 2003**

President	John Lawrence
Secretary	Destina Munro
Treasurer	Tom Clark
Committee	Brian Seach
	Joe Ten Broeke
	Chris McCarthy
	Mike Parrott
	Dennis Hamblin
	Tim Smith

**2003 – 2004**

President	Brian Seach
-----------	-------------

Secretary	Yvette McDonald
Treasurer	Tom Clark
Committee	John Coe
	Carolyn Wallace
	Joe Ten Broeke
	Mike Parrott
	Tim Smith
	Irene Callaghan

**2004 – 2005**

President	John Coe
Secretary	Yvette McDonald
Treasurer	Tom Clark
Committee	Brian Seach
	Tim Smith
	Joe Ten Broeke
	Irene Callaghan
	Mike Parrott
	To Shing
	Margaret Brown

Non-Committee Officers	Membership Secretary	Judy Lyon
	Dark Room Attendant	Cherillisha Forest
	Librarian	Meyricke Serjeantson
	Meeter Greeter	Denis Hamblin
	Competition Collector	Destina Munro

**2005 – 2006**

President	committee to recommend
Secretary	Yvette MacDonald
Treasurer	Tom Clark
Committee	Tim Smith Lauren Smith Joe Ten Broeke Brian Seach Mike Parrott Peter Lang

**2006 – 2007**

President	acting Peter Lang
Secretary/Treasurer	Tom Clark
Membership Secretary	Yvette MacDonald
Committee	Tim Smith Joe Ten Broeke Brian Seach Hilary Parker Meyricke Serjeantson

**2007 – 2008**

President	Jo Thomson
Vice President	Patsy Williamson
Secretary	Yvette McDonald
Treasurer	Tom Clark

Committee	Tim Smith
	Joe Ten Broeke
	Hilary Parker
	Meyricke Serjeantson
	Margaret Low

### **2008 – 2009**

President	Patsy Williamson	
Vice President	Peter Lang	
Secretary	Yvette McDonald	
Treasurer	Hilary Parker	
Committee	Tim Smith	
	Joe Ten Broeke	
	Denise Gandy	
	Meyricke Serjeantson	
	Margaret Low	
Non-Committee Officers	Dark Room Attendant	Arthur Wong
	Trip Organiser	Jon Coe

### **2009 – 2010**

President	Meyricke Serjeantson
Vice President	Peter Lang
Treasurer	Hilary Parker
Secretary	Yvette McDonald
Immediate Past President	Patsy Williamson
Competition Secretary	Denise Gandy
Committee	Tim Smith

	Joe Ten Broeke	
Non- Committee Officers	Dark Room Attendant	Arthur Wong
	Web site	Meyricke Serjeantson
	Librarian	Margaret Low

**2010 – 2011**

President	Geoff Marshall
Vice President	Tim Smith
Treasurer	Roger Beckett
Secretary	Meyricke Serjeantson
Competition Secretary	Ray Lovell
Committee	Yvette McDonald
	Patsy Williamson

**2011 - 2012**

President	Geoff Marshall
Vice President	Tim Smith
Treasurer	Roger Beckett
Secretary	Meyricke Serjeantson
Competition Secretary	Ray Lovell
Committee	Helen Westerbeke
	Brian Hopper (resigned)
	Destina Munro (subconded)

**2012- 2013**

President	Geoff Marshall
Vice President	Tim Smith
Treasurer	Roger Beckett
Secretary	Destina Munro (acting)
Competition Secretary	Ray Lovell
Committee	Elyse Childs
	Peter Lang (subconded)
	Margaret Low (Liason Porirua Arts Council)
	Steve Courtenay (Web Master)



## KCC Cup winners –

KODAK PHOTOGRAPHIC AWARD For KCC **Colour Print Champion**



- 1976 D Holt
- 1977 B Young
- 1978 B Young
- 1979 B Young
- 1980 B Young
- 1981 N Penman
- 1982 N Penman
- 1983 N Penman
- 1984 N Penman
- 1985 N Penman
- 1986 D Hines

1987 D Hines

1988 B Young

1989 J Howell

1990 J Howell

1991 P Hollis

## PCPS SHEA CUP – for **Monochrome Print Championship**

From 1972 Animal Study



1967 Mrs K M Rapson

1968 Dr. W Newport

1969 Dr. W Newport

1970 M S Morrell

-----

1972 G Bushby Colour

M Morrell Mono

1973 J Ten Broeke Colour

B W Bushby Mono

1974 D R Holt Colour

LEC Johnson Mono

1974(2)	R W Jackson	Colour
	A Adams	Mono
1975	LT Callaghan	Colour
	Dr. W C Newport	Mono
1976	D Holt	Colour
	B Young	Mono
1977	W Boyd	
1978	W Boyd	Colour
	A Corry	Mono
1979	B Young	Mono
	W Boyd	Colour
1980	C Smith	Mono
	G Forbes	Colour
1981	A Corry	Mono
	Mrs E Beck	Colour
	G Marshall	Colour
1982	G Marshall	Mono
	G Marshall	Colour
	G Roberts	Colour
1983	C Smith	Mono
	R Maysmor	Colour
	N Penman	Colour

	B Young	Colour
1984	G Marshall	Mono
	J Ayliffe	Colour
	A Adams	Colour
1987	G Pearson	Colour
1988	G Marshall	Colour
1991	R Walker	Colour
1992	K Dobchuk	
	E Honey	
1993	E Gaunt	
1995	J Campbell	
1996	A Galbraith (Child)	

Kapiti Camera Club **Best Colour Photographer**



1985 D Hines

1986 G Pearson

1987 G Pearson

1988 B Moller

1989 T Pointon

1990 T Pointon

1991 T Pointon



Camera House Cup for Kapiti Camera Club **Best Print of the Year Colour**



- 1983 Bob Maysnor
- 1984 J McLoughlin
- 1985 D Hines
- 1986 A Adams
- 1987 D Hines
- 1988 J Howell
- 1989 J Howell
- 1990 J Howell
- 1991 J Howell
- 1992 B Young
- 1993 T Pointon
- 1994 M Brown
- 1995 M Parrott

1996 A Galbraith  
1997 M Parrott  
1998 M Parrott  
1999 D Munro  
2000 C Wallace  
2001 M Brown  
2002 D Hamblin  
2003 D Munro  
2004  
2005 Margaret Low

## KCC Colour Championship



1969 D Porter

1970 D R Holt

1971 D R Holt

1972 D R Holt

1973 D R Holt

1974 D R Holt

J M Hall

1975 J Ten Broeke

1976 G Minshall

1977 G Minshall

1978 Mrs P Maidens

1979 J Ayliffe

1980 A May  
1981 J Ten Broeke  
1982 J Ayliffe  
1983 R Maysmor  
1984 G Marshall  
1985 J Ten Broeke  
1986 G Marshall  
1987 J Ten Broeke  
1988 J Ten Broeke  
1989 J Ten Broeke  
1990 J Ten Broeke  
1991 J Ten Broeke

## Rothman's Cultural Foundation Cup

KCC Monochrome Print – Junior Grade



1969 D Holt

1970 C Chapmen

1971 C Chapmen

1972 G Bushby

1973 G Bushby

1974 G Bushby

B Solomon

1975 P Liss

1984 R Bird

1985 D Dawe

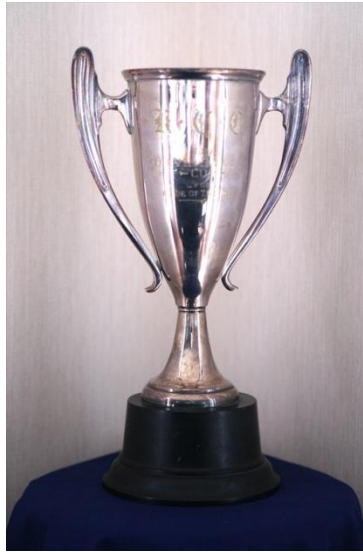
1986 P Reesby

1987 N Butler

1988 S Bowes



KCC The David R Holt Cup for Slide of the Year



1969 Mrs C Holt

1970 C Chapman

1971 J Ten Broeke

1972 J Hall

1973 M Webber

1974 P Liss

1975 G Minshall

1976 G Minshall

1977 J Ayliffe

1978 E Honey

1979 J Ten Broeke

1980 J Ayliffe

1981 J Forbes  
1982 G Marshall  
1983 R Maysmor  
1984 E Honey  
1985 J Cassells  
1986 G Marshall  
1987 J Ten Broeke  
1988 A Corry  
1989 J Ten Broeke  
1990 J Ayliffe  
1991 L Gaunt  
1992 L Gaunt  
1993 L Mill  
1994 L Mill  
1995 L Mill  
1996 J Ten Broeke  
1997 L Lake  
1998 L Lake  
1999 E Beck  
2000 J Lawrence  
2001 J Lawrence  
2002 J Lawrence

---

C Wallace

2003 Margaret Brown

2004 Destina Munro

---

## K CC Print Champion – Senior Grade



1970	D Holt
1971	LEC Johnson
1972	M Morrell
1973	LEC Johnson
1974	LEC Johnson
1975	G Bushby
1976	R Young
1977	R Young
1979	A May
1980	C Smith
1981	A Corry
1982	G Marshall
1983	G Marshall

1984	G Marshall
1985	G Marshall
1986	G Marshall
1987	A Corry
1988	A Corry
1990	K Browne
1991	E Honey
2003	A Wong (Digital Image)
2004	Jon Coe
2005	Tim Smith

KCC - UFS Cup – Print of the Year.



1969	D R Holt
1970	G L Stone (deleted)
1971	D R Holt
1972	D R Holt
1973	H Holt
1974	C Grannetia
1975	B Soloman
1976	B Young
1977	B Young
1978	B Young
1979	B Young
1980	C Smith
1981	E D Long

1982	G Marshall
1983	K Browne
1984	N Penman
1985	N Penman
1986	N Penman
1987	A Corry
1988	B Young
1989	N Penman
1990	N Penman
1991	N Penman
1992	G Bittle
1993	K Browne
1994	G Marshall
1995	M Parrott
1996	G Marshall
2000	C Wallace
2001	J Lawrence
2002	D Hamblin
2003	D Munroe
2004	Jon Coe
2005	Arthur Wong



## KCC Landscape & Coastal Monochrome Challenge Trophy



1973	H Holt
1974	LEC Johnson
1975	B Peebles
1976	B Young
1977	G Marshall
1978	E Honey
1979	B Young
1981	J Crimp
1982	A Corry
1983	G Marshall
1984	G Marshall
1985	R Bird

1986	G Marshall
1987	G Marshall
1988	D Dawe – Colour
1989	J Howell
1990	J Howell
1992	E Beck
1993	B Young
1994	E Honey
1995	N Penman
1996	L Mill – Colour
1997	L Mill
1998	R Walker
1999	C Tume
2000	B Seach
2002	J Lawrence

## Life Members:-

Mr Leo Johnson	voted 1978
Mr D Holt	voted 1978
Mrs C Holt	voted 1978
Mr Mark Webber	voted 1982
Mr Arthur May	voted 1984
Mr C Smith	voted 1990
Edith Beck	voted 1994
Eric Honey	voted 1996
Joe Ten-Broeke	voted
Neil Penman	voted
Geoff Marshall	voted 2012
Tim Smith	

## Appendices

Cross Section of Images from the “Portrait of Porirua Exhibition” displayed Porirua 1995 also in Porirua’s twin city of Nishio, Japan early 1996.



Photographer Brian Seach



Photographer Michael Parrott



Photographer Roy Walker



Photographer Alan Galbraith



Photographer Pauline Colville



Photographer Mike Wiles





Photographer Ray Haggland



Photographer Roy Walker



Photographers Eric Honey



Margaret Brown



Michael Parrott



Photographer Carolyn Wallace



Photographer Simon Woolf

Compiled by Ray Lovell on Microsoft Word and saved as a PDF for email release.

Edited by Patsy Williamson.

This edition released 1 November 2012

Revised edition released 29 November 2018

## **NOTICE:-**

A full update of the history of the KCC will be released on 24 February 2019 and published on the web site.

KCC - Timeline 2009 - 2019

in celebration of the clubs 50th Anniversary.

[ray@actrix.gen.nz](mailto:ray@actrix.gen.nz)